

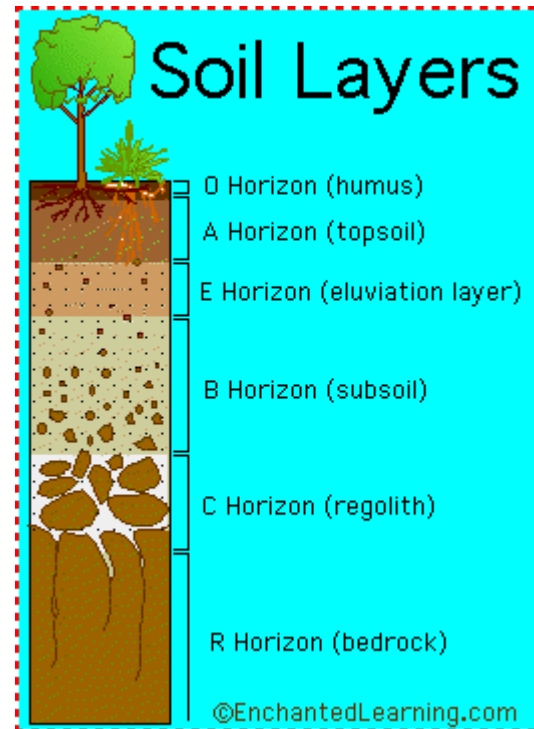
# Konsep dan Definisi

LAHAN

# Land=lahan, soil = tanah

## Lapisan tanah

- ▶ Land= lahan
- ▶ Bagian dari bumi yang tidak tertutup oleh air



Landscape= bentang alam



# Urban landscape





















# Rural landscape



# landform

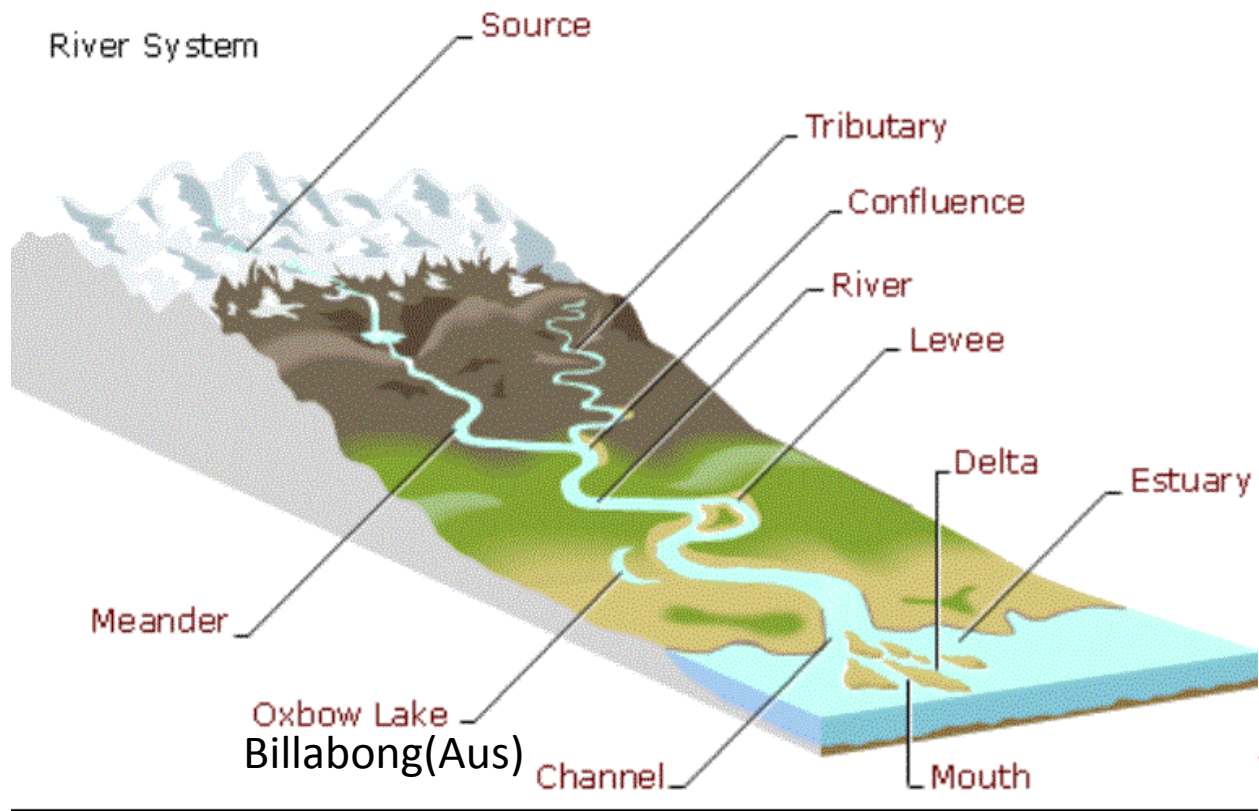
- ▶ Landform or physical feature comprises a geomorphological unit, and is largely defined by its surface form and location in the landscape, as part of the terrain, and as such, is typically an element of topography.
- ▶ Landform elements also include seascape and oceanic waterbody interface features such as bays, peninsulas, seas etc.



# landform



# landform

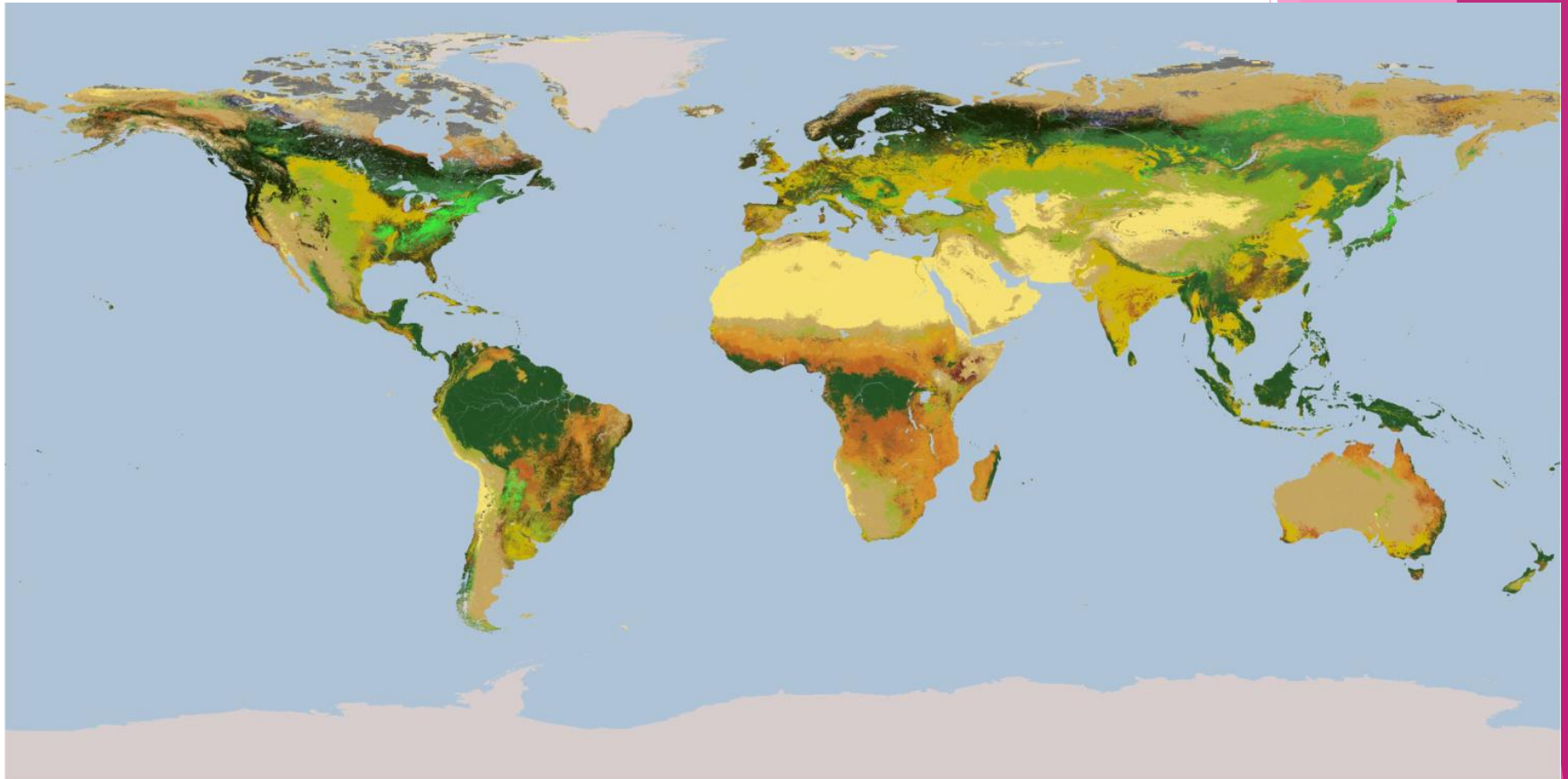




# Land cover

- ▶ Land cover is the physical material at the surface of the earth.
- ▶ Land covers include grass, asphalt, trees, bare ground, water, etc.
- ▶ There are two primary methods for capturing information on land cover:
  - ▶ field survey
  - ▶ analysis of remotely sensed imagery.

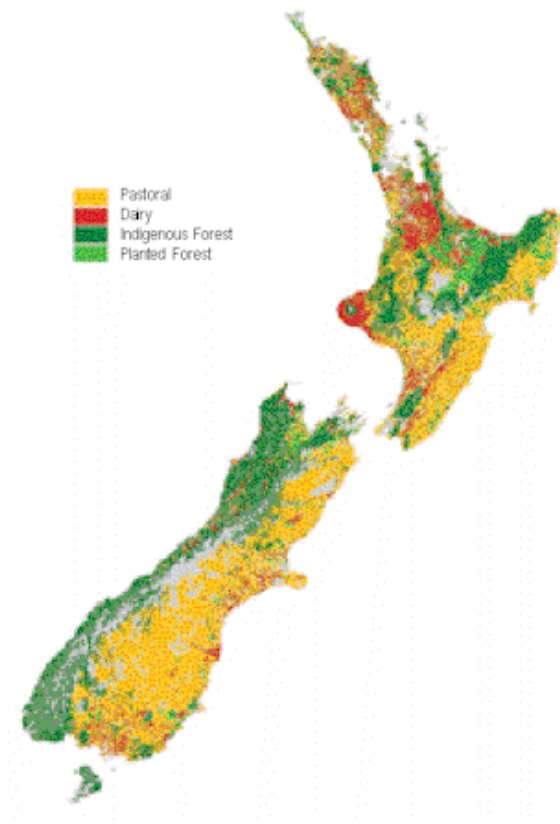
# Land cover dunia



- |                               |                       |                                 |
|-------------------------------|-----------------------|---------------------------------|
| 0 Water                       | 6 Closed Shrublands   | 12 Croplands                    |
| 1 Evergreen Needleleaf Forest | 7 Open Shrublands     | 13 Urban and Built-Up           |
| 2 Evergreen Broadleaf Forest  | 8 Woody Savannas      | 14 Cropland/Natural Veg. Mosaic |
| 3 Deciduous Needleleaf Forest | 9 Savannas            | 15 Snow and Ice                 |
| 4 Deciduous Broadleaf Forest  | 10 Grasslands         | 16 Barren or Sparsely Vegetated |
| 5 Mixed Forests               | 11 Permanent Wetlands | 17 Tundra                       |



# Peta land cover



This map displays the land cover of the Oakton, Virginia area. The legend identifies the following categories:

- Water
- Evergreen Needleleaf Forest
- Evergreen Broadleaf Forest
- Deciduous Needleleaf Forest
- Deciduous Broadleaf Forest
- Mixed Forest
- Woodland
- Wooded Grassland
- Closed Shrubland
- Open Shrubland
- Grassland
- Cropland
- Bare Ground
- Urban and Built-up

# Land use

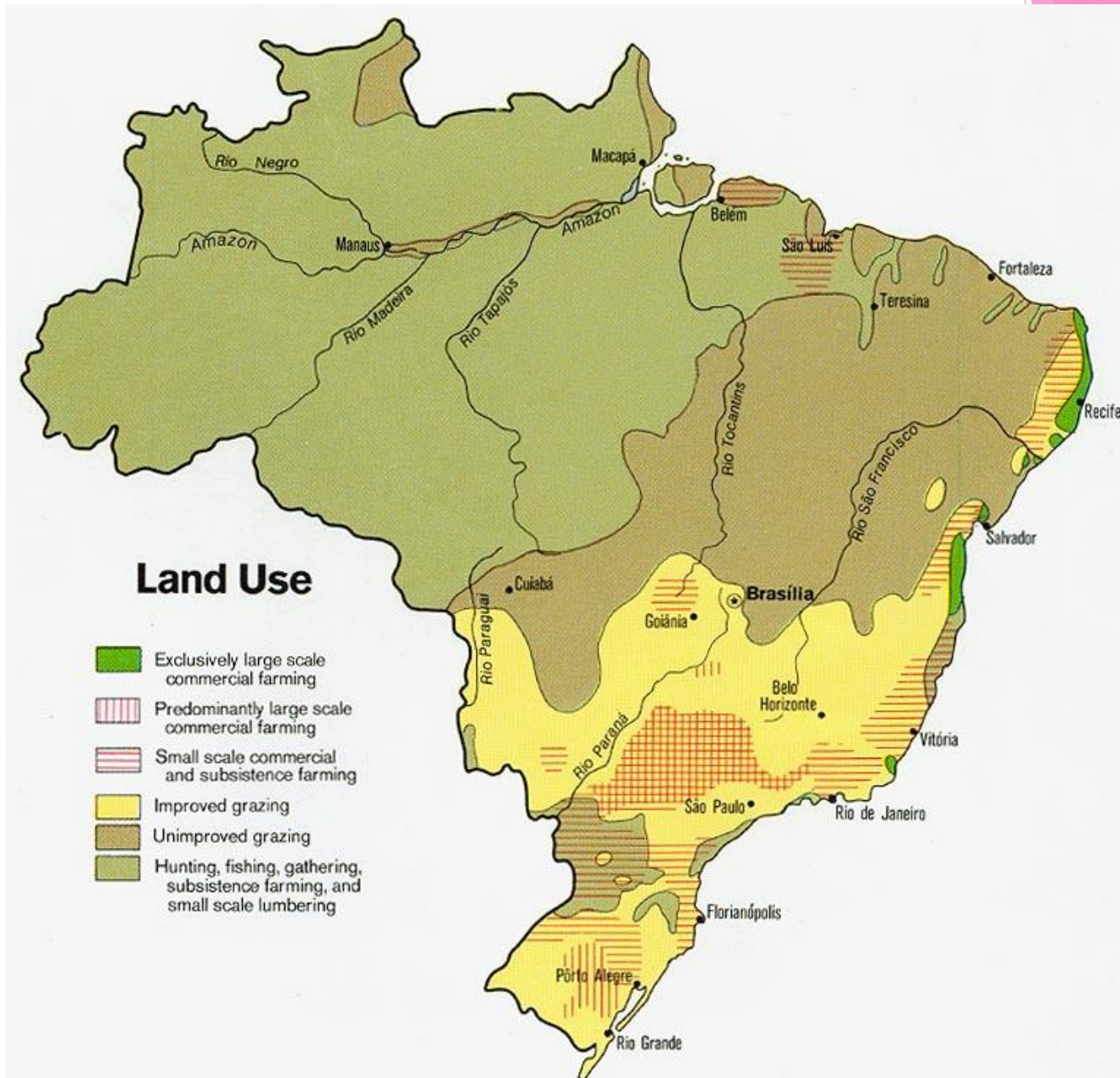
- ▶ Land use is the human modification of natural environment or wilderness into built environment such as fields, pastures, and settlements.



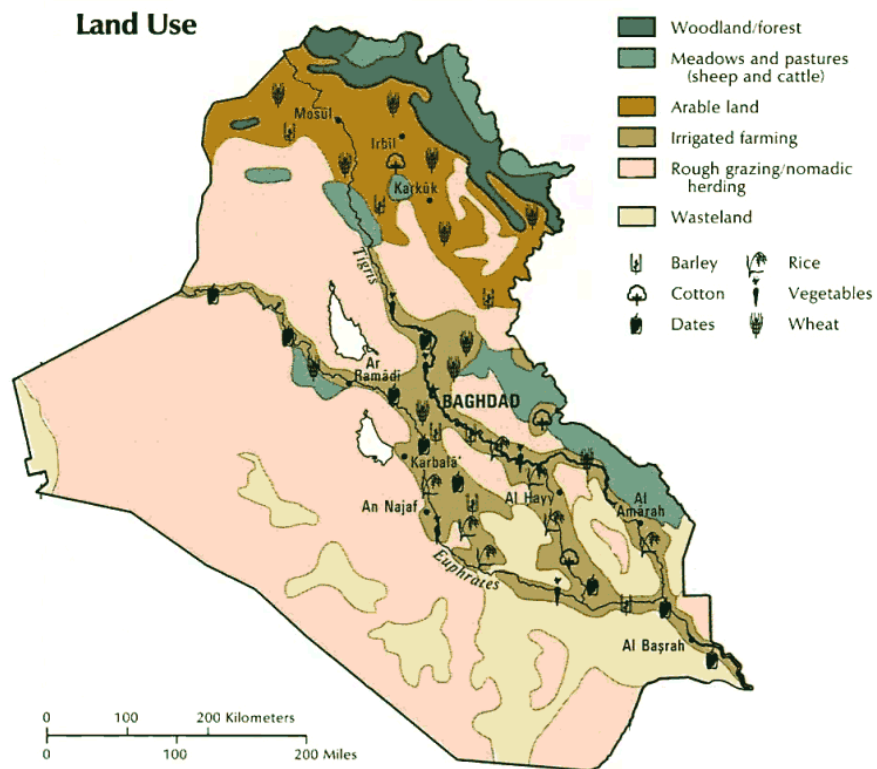
# Land use



# Land use = guna lahan

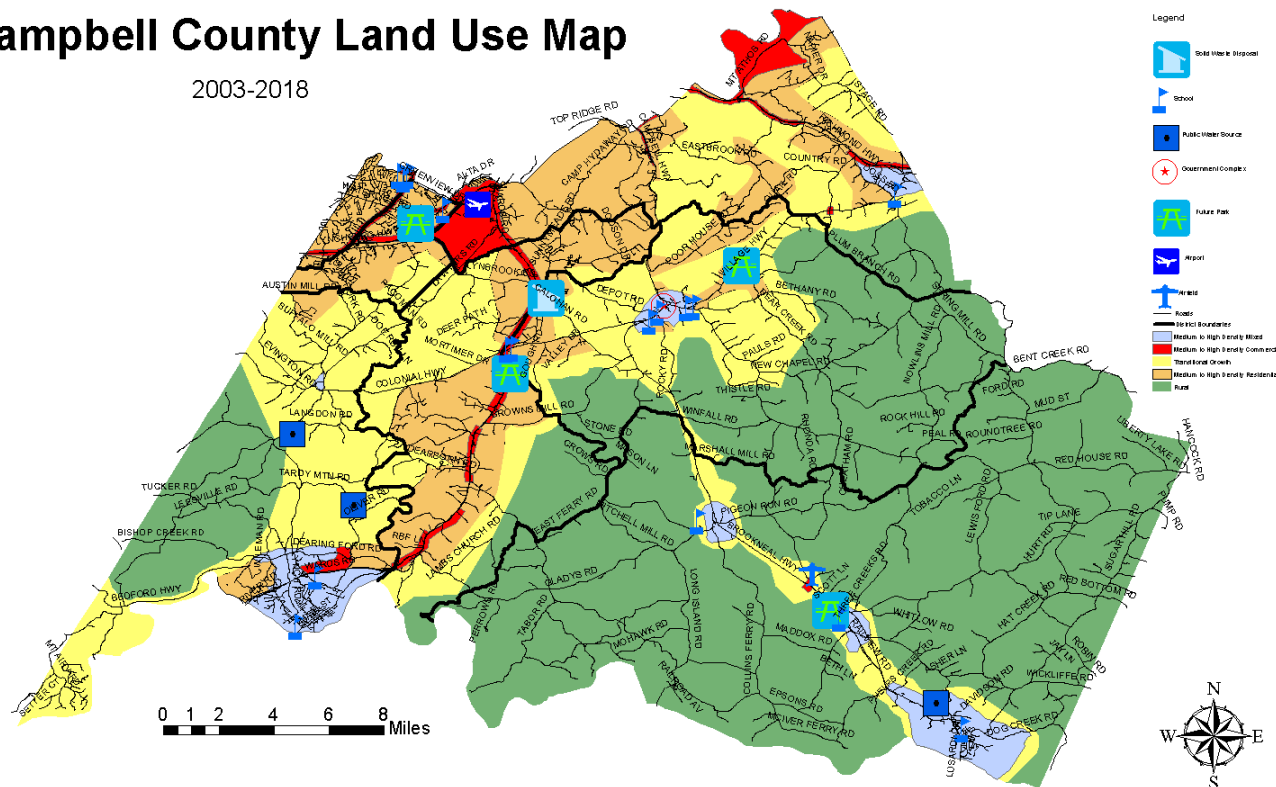


# Land use = guna lahan

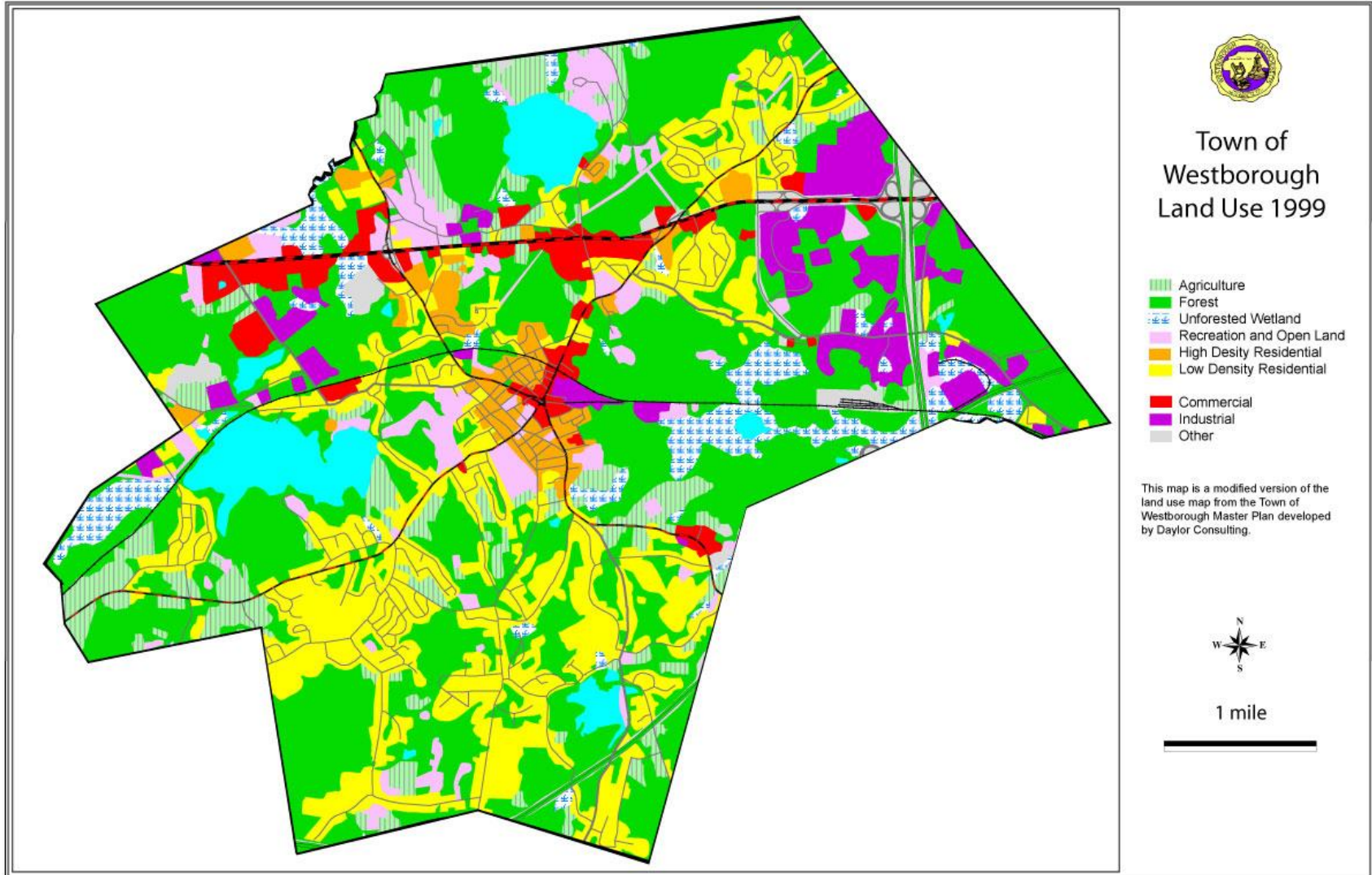




## 2003-2018



# Guna lahan Kota Westborough



# Rencana guna lahan

