



Data Communication

Pendahuluan, Pengenalan Silabi dan Aturan Perkuliahan

Susmini I. Lestaringati, M.T

Profil Mata Kuliah

Nama Mata Kuliah	:	Komunikasi Data	
Kode Mata Kuliah	:	TK 34304	
SKS	:	3	
Jenis	:	Wajib	
Jam Pelaksanaan	:	Tatap muka di kelas	= 3 jam per minggu
Semester / Tingkat	:	IV (Empat)/ 2 (Dua)	
Prasyarat	:		

Mata kuliah ini membahas tentang Komunikasi Data, konsep, komponen penunjang, hingga implementasinya di kehidupan sehari-hari. Selain itu juga membahas tentang model Jaringan yaitu OSI Model, serta protocol TCP/IP. Pada mata kuliah ini akan membahas lebih spesifik layer Fisik dan Data Link pada OSI Model. Mulai dari pengiriman data pada layer fisik berupa data analog maupun digital, modulasi analog dan digital, serta implementasinya. Pembahasan layer Datalink, mulai dari framing, Flow control hingga Error Control.

Rencana Pembelajaran Semester

Minggu ke-	Bahan Kajian (Materi Ajar)	
1	Introduction	<ul style="list-style-type: none"> • Data Communication • Networks • The Internet • Protocol and Standards
2	Communication Protocol	<ul style="list-style-type: none"> • The OSI Model • Layers in the OSI Model • TCP/IP Protocol Suite • Addressing
3,4	Data and Signals	<ul style="list-style-type: none"> • Analog and Digital • Periodic Analog Signals • Digital Signals • Transmission Impairment • Data Rate Limits • Performance
5.6	Digital Transmissions	<ul style="list-style-type: none"> • Digital to Digital Conversion • Analog to Digital Conversion • Transmission Modes
7	Analog Transmission	<ul style="list-style-type: none"> • Digital to Analog Transmission • Analog to Analog Conversion
8	Ujian Tengah Semester	

Rencana Pembelajaran Semester

Minggu ke-	Bahan Kajian (Materi Ajar)	
9	Switching and Multiplexing	<ul style="list-style-type: none"> • Circuit Switch and Packet Switch • Frequency Division Multiplexing, Wavelength Division Multiplexing, Synchronous Time Division Multiplexing, Statistical Time Division Multiplexing
10	Spread Spectrum	<ul style="list-style-type: none"> • Frequency Hopping Spread Spectrum • Direct Sequence Spread Spectrum
11	Transmission Media	<ul style="list-style-type: none"> • Guided Media : Twisted Pair Cable, Coaxial Cable, Fiber Optic Cable • Unguided Media: Radio Waves, Microwaves, InfraRed
12	Multiple Access	<ul style="list-style-type: none"> • Frequency Division Multiple Access • Time Division Multiple Access • Code Division Multiple Access
13,14	Data Link Layer	<ul style="list-style-type: none"> • Types of Error • Redundancy • Error Detection and Error Correction
15	Wired LANs and Wireless LANs	<ul style="list-style-type: none"> • IEEE Standard • IEEE 802.3 (Ethernet), IEEE 802.11 (Wifi)
16	Ujian Akhir Semester	

Rules in My Class

- Mahasiswa datang tepat waktu, mahasiswa sudah berada didalam kelas, apabila dosen sudah ada di kelas maka mahasiswa yang datang setelahnya tidak diperbolehkan masuk ke dalam kelas demi menjaga ketertiban selama perkuliahan.
- Mahasiswa berpakaian rapih dan sopan. (wanita tidak menggunakan riasan muka dan aksesoris secara berlebihan, pria tidak menggunakan aksesoris secara berlebihan, rambut rapih, tidak panjang)
- Selama perkuliahan berlangsung tidak ribut, tidak menyalakan HP ataupun menerima telepon didalam kelas.
- Tugas dikerjakan di kertas A4, diluar yang telah ditentukan tidak diterima.
- Tidak ada tugas/quiz/ujian susulan (kecuali untuk UTS dan UAS disertai bukti rawat inap di Rumah sakit)

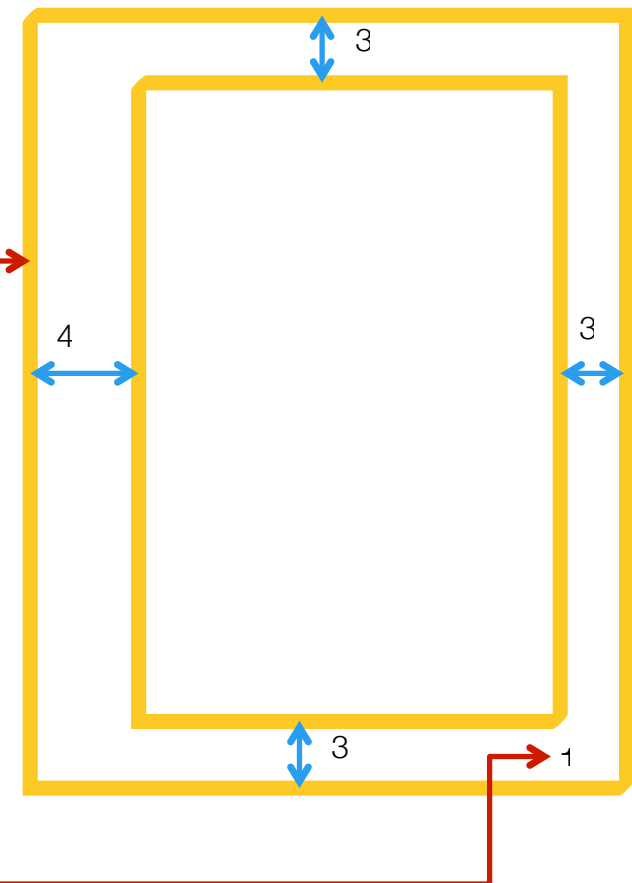
Grades

Tugas dan Quiz	30%
Ujian Tengah Semester	30%
Ujian Akhir Semester	40%
Total	100 %

Syarat untuk mengikuti UAS : minimum kehadiran 80% (maksimum ketidakhadiran adalah 3 kali)

Ketentuan Tugas

- Diberi sampul/ cover
- Tidak dijilid/ dicover plastik
- Kertas Ukuran A4
- Margin atas, bawah, kanan, kiri :
3 – 3 – 3 – 4
- Font : Times New Roman
- Size : 12
- Line spacing : 1,5
- Align Text: Justify
- Posisi halaman di kanan bawah
(dengan font yang sama)



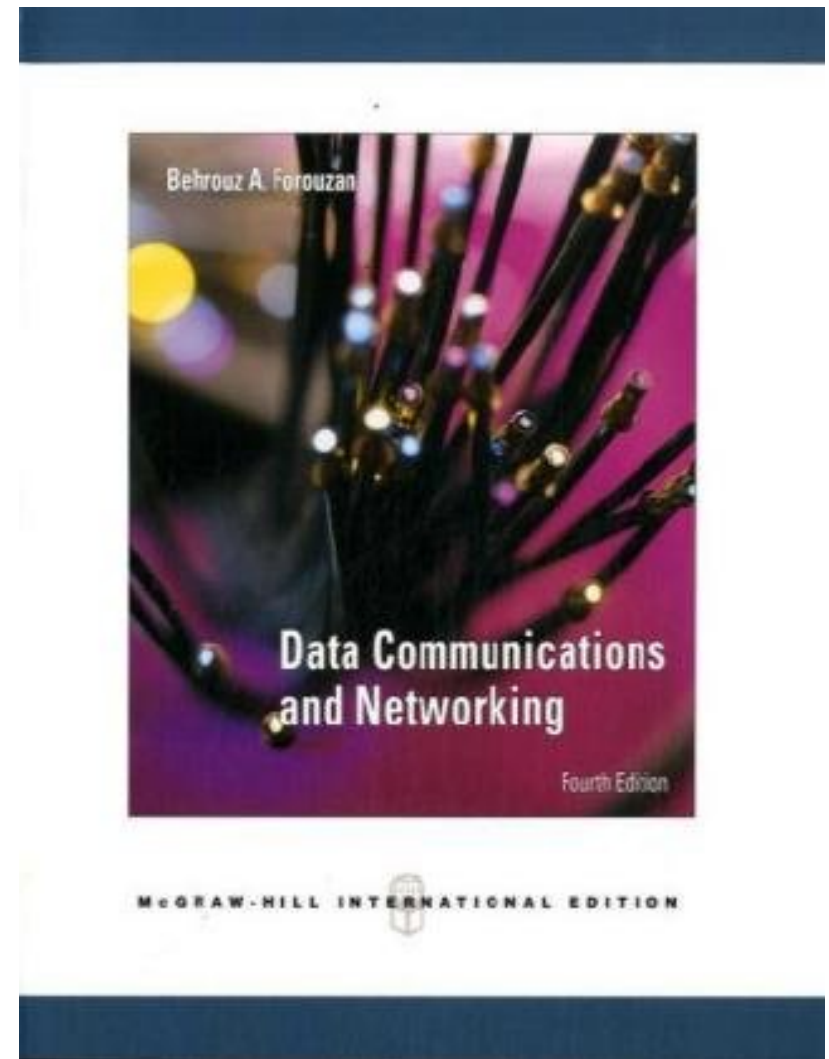
Reference Book

- Buku bacaan wajib:

Behrouz A. Forouzan, Data Communication and Computer Networks, 5th Edition, Mc-Graw Hill, 2012.

- Buku bacaan tambahan:

William Stalling, Data and Computer Communications, 10th Edition, Pearson, 2015.



The background of the top section features a blue and white graphic of a modern building with many windows. Overlaid on this is the UNIKOM logo, which consists of the word "UNIKOM" in a large, blue, 3D-style font. To the right of the text is a circular yellow emblem with a blue border containing the text "UNIVERSITAS KOMPUTER INDONESIA" and "UNIKOM" at the bottom. Inside the emblem is a stylized figure holding a torch. Below the main text, the words "INDONESIA COMPUTER UNIVERSITY" and "QUALITY IS OUR TRADITION" are written in a smaller, blue, sans-serif font.

UNIKOM

INDONESIA COMPUTER UNIVERSITY
QUALITY IS OUR TRADITION

1

Data Communication

Week 1 Introduction

Susmini I. Lestaringati, M.T

Data Communication

- **Definition:**
 - Data communications are the exchange of data between two devices via some form of transmission medium such as a wire cable.
 - For data communications to occur, the communicating devices must be part of a communication system made up of a combination of hardware (physical equipment) and software (programs).
- The effectiveness of a data communications system depends on four fundamental characteristics: ***delivery***, ***accuracy***, ***timeliness***, and ***jitter***.



Four Fundamental Characteristics

- **Delivery.**

The system must deliver data to the correct destination. Data must be received by the intended device or user and only by that device or user.

- **Accuracy.**

The system must deliver the data accurately. Data that have been altered in transmission and left uncorrected are unusable.

- **Timeliness.**

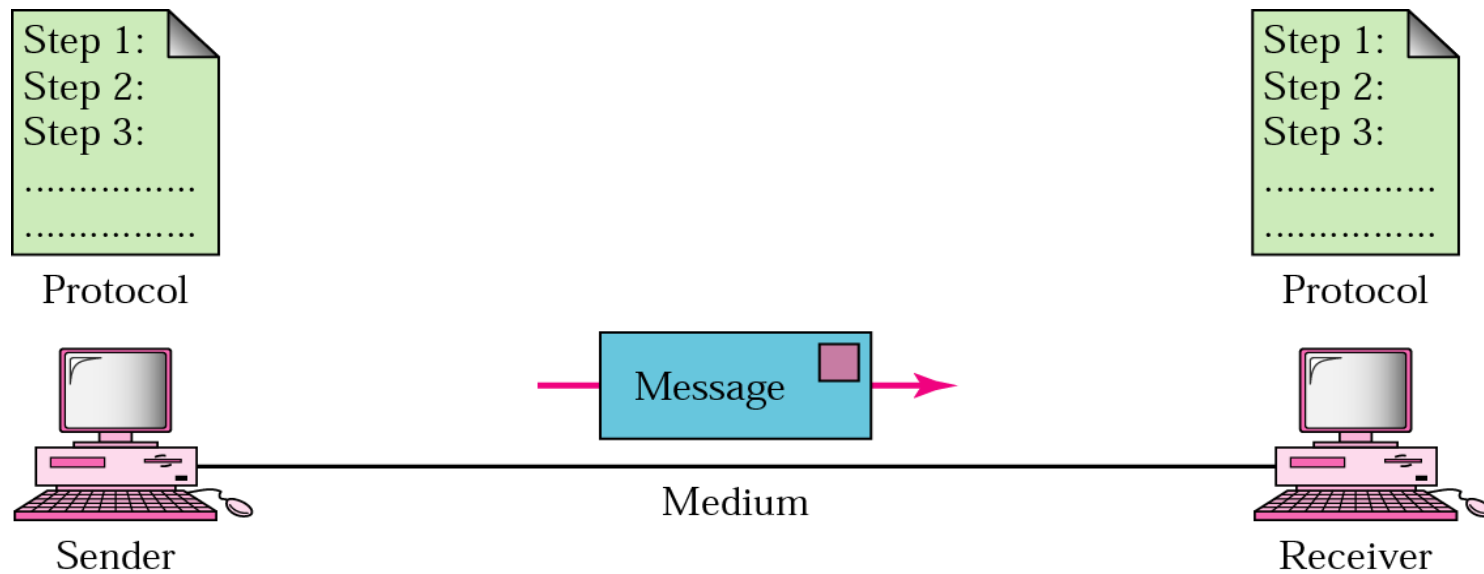
The system must deliver data in a timely manner. Data delivered late are useless. In the case of video and audio, timely delivery means delivering data as they are produced, in the same order that they are produced, and without significant delay. This kind of delivery is called real-time transmission.

- **Jitter.**

Jitter refers to the variation in the packet arrival time. It is the uneven delay in the delivery of audio or video packets.

Components

- A data communications system has five components



- Message : The information (data) to be communicated.
- Sender : The device that sends the data message.
- Receiver : The device that receive the message
- Medium : The transmission medium is the physical path by which a travels from sender to receiver
- Protocol : Set of rules that govern data communication

Data Representation (1)

- Information today comes in different forms such as text, numbers, images, audio, and video.
- **Text**
 - In data communications, text is represented as a bit pattern, a sequence of bits (0s or 1s).
 - Different sets of bit patterns have been designed to represent text symbols. Each set is called a code, and the process of representing symbols is called coding.
 - Today, the prevalent coding system is called Unicode, which uses 32 bits to represent a symbol or character used in any language in the world. The American Standard Code for Information Interchange (ASCII), developed some decades ago in the United States, now constitutes the first 127 characters in Unicode and is also referred to as Basic Latin.

ASCII Code

Dec	Hx	Oct	Char	Dec	Hx	Oct	Html	Chr	Dec	Hx	Oct	Html	Chr	Dec	Hx	Oct	Html	Chr
0	0	000	NUL (null)	32	20	040	 	Space	64	40	100	@	@	96	60	140	`	`
1	1	001	SOH (start of heading)	33	21	041	!	!	65	41	101	A	A	97	61	141	a	a
2	2	002	STX (start of text)	34	22	042	"	"	66	42	102	B	B	98	62	142	b	b
3	3	003	ETX (end of text)	35	23	043	#	#	67	43	103	C	C	99	63	143	c	c
4	4	004	EOT (end of transmission)	36	24	044	$	\$	68	44	104	D	D	100	64	144	d	d
5	5	005	ENQ (enquiry)	37	25	045	%	%	69	45	105	E	E	101	65	145	e	e
6	6	006	ACK (acknowledge)	38	26	046	&	&	70	46	106	F	F	102	66	146	f	f
7	7	007	BEL (bell)	39	27	047	'	'	71	47	107	G	G	103	67	147	g	g
8	8	010	BS (backspace)	40	28	050	((72	48	110	H	H	104	68	150	h	h
9	9	011	TAB (horizontal tab)	41	29	051))	73	49	111	I	I	105	69	151	i	i
10	A	012	LF (NL line feed, new line)	42	2A	052	*	*	74	4A	112	J	J	106	6A	152	j	j
11	B	013	VT (vertical tab)	43	2B	053	+	+	75	4B	113	K	K	107	6B	153	k	k
12	C	014	FF (NP form feed, new page)	44	2C	054	,	,	76	4C	114	L	L	108	6C	154	l	l
13	D	015	CR (carriage return)	45	2D	055	-	-	77	4D	115	M	M	109	6D	155	m	m
14	E	016	SO (shift out)	46	2E	056	.	.	78	4E	116	N	N	110	6E	156	n	n
15	F	017	SI (shift in)	47	2F	057	/	/	79	4F	117	O	O	111	6F	157	o	o
16	10	020	DLE (data link escape)	48	30	060	0	0	80	50	120	P	P	112	70	160	p	p
17	11	021	DC1 (device control 1)	49	31	061	1	1	81	51	121	Q	Q	113	71	161	q	q
18	12	022	DC2 (device control 2)	50	32	062	2	2	82	52	122	R	R	114	72	162	r	r
19	13	023	DC3 (device control 3)	51	33	063	3	3	83	53	123	S	S	115	73	163	s	s
20	14	024	DC4 (device control 4)	52	34	064	4	4	84	54	124	T	T	116	74	164	t	t
21	15	025	NAK (negative acknowledge)	53	35	065	5	5	85	55	125	U	U	117	75	165	u	u
22	16	026	SYN (synchronous idle)	54	36	066	6	6	86	56	126	V	V	118	76	166	v	v
23	17	027	ETB (end of trans. block)	55	37	067	7	7	87	57	127	W	W	119	77	167	w	w
24	18	030	CAN (cancel)	56	38	070	8	8	88	58	130	X	X	120	78	170	x	x
25	19	031	EM (end of medium)	57	39	071	9	9	89	59	131	Y	Y	121	79	171	y	y
26	1A	032	SUB (substitute)	58	3A	072	:	:	90	5A	132	Z	Z	122	7A	172	z	z
27	1B	033	ESC (escape)	59	3B	073	;	;	91	5B	133	[[123	7B	173	{	{
28	1C	034	FS (file separator)	60	3C	074	<	<	92	5C	134	\	\	124	7C	174	|	
29	1D	035	GS (group separator)	61	3D	075	=	=	93	5D	135]]	125	7D	175	}	}
30	1E	036	RS (record separator)	62	3E	076	>	>	94	5E	136	^	^	126	7E	176	~	~
31	1F	037	US (unit separator)	63	3F	077	?	?	95	5F	137	_	_	127	7F	177		DEL

Source: www.LookupTables.com

Data Representation (2)

- **Numbers**

- Numbers are also represented by bit patterns. However, a code such as ASCII is not used to represent numbers; the number is directly converted to a binary number to simplify mathematical operations.

- **Images**

- Images are also represented by bit patterns. In its simplest form, an image is composed of a matrix of pixels (picture elements), where each pixel is a small dot. The size of the pixel depends on the resolution. For example, an image can be divided into 1000 pixels or 10,000 pixels. In the second case, there is a better representation of the image (better resolution), but more memory is needed to store the image.
- There are several methods to represent color images. One method is called RGB, so called because each color is made of a combination of three primary colors: red, green, and blue. The intensity of each color is measured, and a bit pattern is assigned to it. Another method is called YCM, in which a color is made of a combination of three other primary colors: yellow, cyan, and magenta.

Data Representation (3)

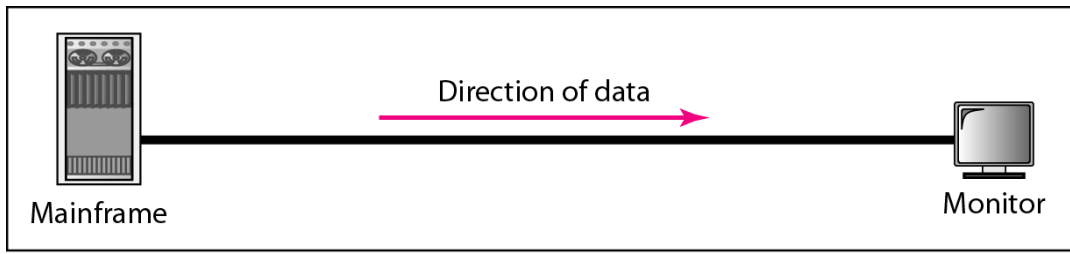
- **Audio**

- Audio refers to the recording or broadcasting of sound or music. Audio is by nature different from text, numbers, or images. It is continuous, not discrete. Even when we use a microphone to change voice or music to an electric signal, we create a continuous signal.

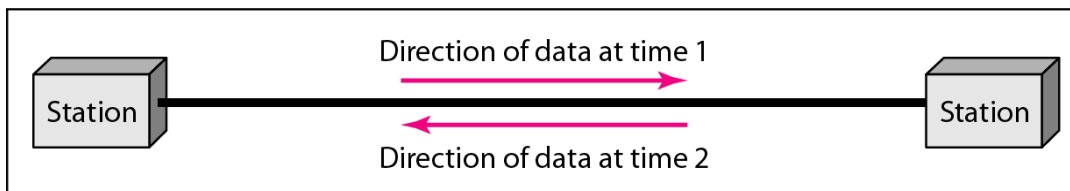
- **Video**

- Video refers to the recording or broadcasting of a picture or movie. Video can either be produced as a continuous entity (e.g., by a TV camera), or it can be a combination of images, each a discrete entity, arranged to convey the idea of motion.

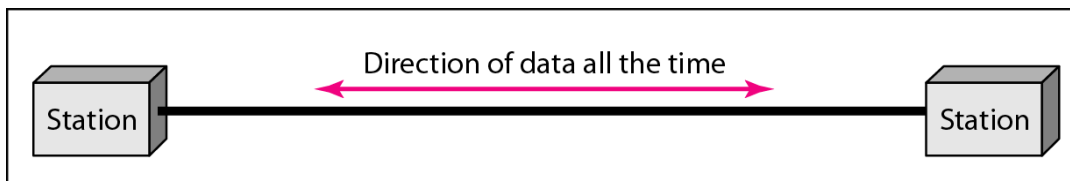
Data Flow



a. Simplex



b. Half-duplex



c. Full-duplex

- In **simplex** mode, the communication is unidirectional. Only one of the two devices on a link can transmit; the other can only receive.
 - Keyboards and traditional monitors are examples of simplex devices. The keyboard can only introduce input; the monitor can only accept output. The simplex mode can use the entire capacity of the channel to send data in one direction.
- In **half-duplex** mode, each station can both transmit and receive, but not at the same time. : When one device is sending, the other can only receive, and vice versa. The half-duplex mode is used in cases where there is no need for communication in both directions at the same time; the entire capacity of the channel can be utilized for each direction.
 - Walkie-talkies and CB (citizens band) radios are both half-duplex systems.
- In **full-duplex** (also called duplex), both stations can transmit and receive simultaneously
 - One common example of full-duplex communication is the telephone network. When two people are communicating by a telephone line, both can talk and listen at the same time.

Networks

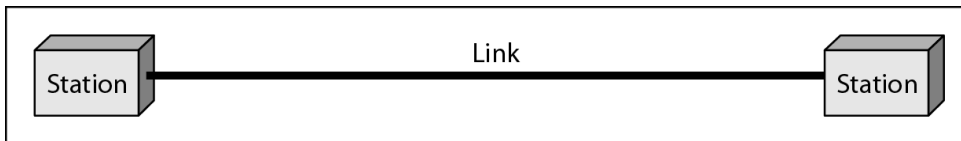
- A network is a set of devices (often referred to as nodes) connected by communication links. A node can be a computer, printer, or any other device capable of sending and/or receiving data generated by other nodes on the network.
- **Distributed Processing**
 - Most networks use distributed processing, in which a task is divided among multiple computers. Instead of one single large machine being responsible for all aspects of a process, separate computers (usually a personal computer or workstation) handle a subset.
- **Network Criteria**
 - A network must be able to meet a certain number of criteria.
 - The most important of these are *performance*, *reliability*, and *security*.

Network Criteria

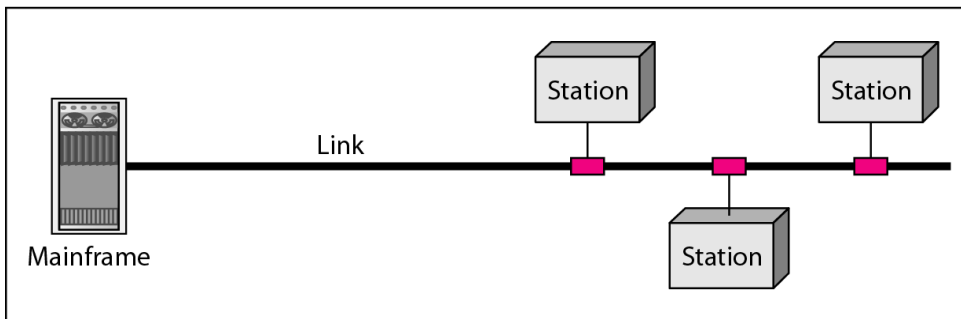
- **Performance**
 - Performance can be measured in many ways, including transit time and response time. Transit time is the amount of time required for a message to travel from one device to another. Response time is the elapsed time between an inquiry and a response. The performance of a network depends on a number of factors, including the number of users, the type of transmission medium, the capabilities of the connected hardware, and the efficiency of the software.
 - Performance is often evaluated by two networking metrics: throughput and delay. We often need more throughput and less delay. However, these two criteria are often contradictory. If we try to send more data to the network, we may increase throughput but we increase the delay because of traffic congestion in the network.
- **Reliability**
 - In addition to accuracy of delivery, network reliability is measured by the frequency of failure, the time it takes a link to recover from a failure, and the network's robustness in a catastrophe.
- **Security**
 - Network security issues include protecting data from unauthorized access, protecting data from damage and development, and implementing policies and procedures for recovery from breaches and data losses.

Physical Types

- A network is two or more devices connected through links. A link is a communications pathway that transfers data from one device to another.
- For communication to occur, two devices must be connected in some way to the same link at the same time.
- There are two possible types of connections: *point-to-point* and *multipoint*.



a. Point-to-point

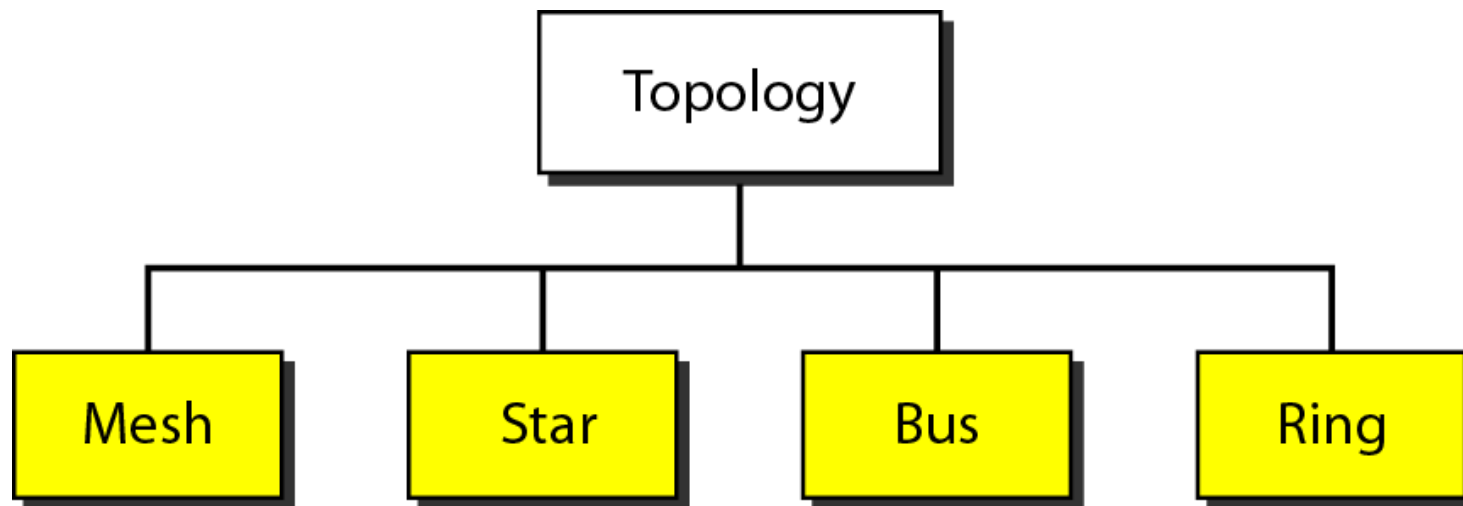


b. Multipoint

- A **point-to-point** connection provides a dedicated link between two devices. The entire capacity of the link is reserved for transmission between those two devices. Most point-to-point connections use an actual length of wire or cable to connect the two ends, but other options, such as microwave or satellite links, are also possible (see Figure 1.3a). When you change television channels by infrared remote control, you are establishing a point-to-point connection between the remote control and the television's control system.
- A **multipoint** (also called multidrop) connection is one in which more than two specific devices share a single link (see Figure 1.3b).
- In a multipoint environment, the capacity of the channel is shared, either spatially or temporally. If several devices can use the link simultaneously, it is a spatially shared connection. If users must take turns, it is a timeshared connection.

Physical Topology

- The term physical topology refers to the way in which a network is laid out physically. Two or more devices connect to a link; two or more links form a topology.
- The topology of a network is the geometric representation of the relationship of all the links and linking devices (usually called nodes) to one another.
- There are four basic topologies possible: *mesh*, *star*, *bus*, and *ring*



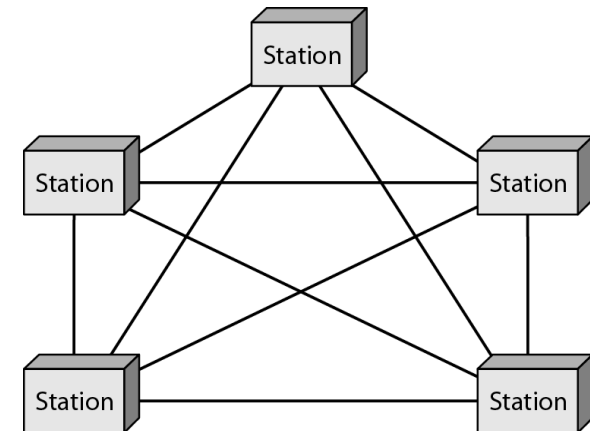
Basic Topology (1)

- **Mesh Topology**

- In a mesh topology, every device has a dedicated point-to-point link to every other device. The term dedicated means that the link carries traffic only between the two devices it connects.
- To find the number of physical links in a fully connected mesh network with n nodes, we first consider that each node must be connected to every other node. Node 1 must be connected to $n - 1$ nodes, node 2 must be connected to $n - 1$ nodes, and finally node n must be connected to $n - 1$ nodes. We need $n(n - 1)$ physical links. However, if each physical link allows communication in both directions (duplex mode), we can divide the number of links by 2. In other words, we can say that in a mesh topology, we need

$$\frac{n(n-1)}{2}$$

duplex - mode links.

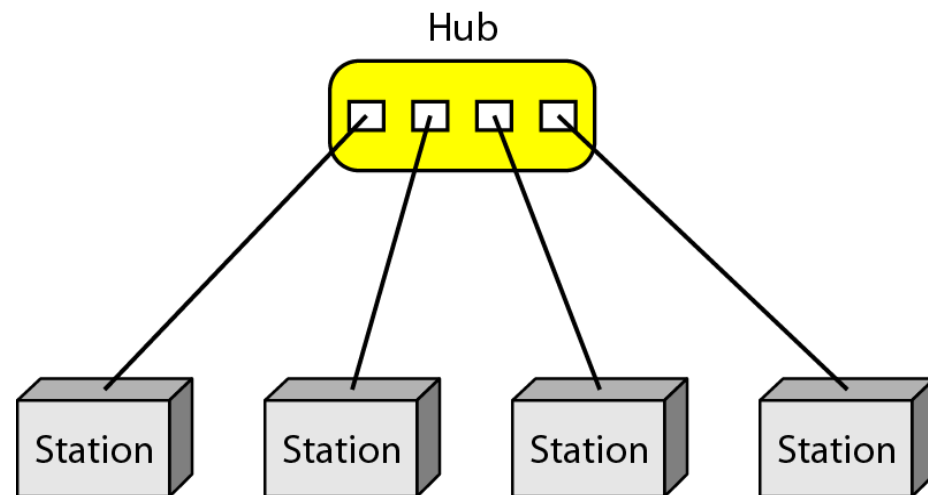


- A mesh offers several advantages over other network topologies. First, the use of dedicated links guarantees that each connection can carry its own data load, thus eliminating the traffic problems that can occur when links must be shared by multiple devices. Second, a mesh topology is robust. If one link becomes unusable, it does not incapacitate the entire system. Third, there is the advantage of privacy or security. When every message travels along a dedicated line, only the intended recipient sees it. Point-to-point links make fault identification and fault isolation easy. Traffic can be routed to avoid links with suspected problems.
- The main disadvantages of a mesh are related to the amount of cabling and the number of I/O ports required. First, because every device must be connected to every other device, installation and reconnection are difficult. Second, the sheer bulk of the wiring can be greater than the available space (in walls, ceilings, or floors) can accommodate. Finally, the hardware required to connect each link (I/O ports and cable) can be prohibitively expensive.
- One practical example of a mesh topology is the connection of telephone regional offices in which each regional office needs to be connected to every other regional office.

Basic Topology (2)

- **Star Topology**

- In a star topology, each device has a dedicated point-to-point link only to a central controller, usually called a hub.
- A star topology is less expensive than a mesh topology. In a star, each device needs only one link and one I/O port to connect it to any number of others. This factor also makes it easy to install and reconfigure. Far less cabling needs to be housed, and additions, moves, and deletions involve only one connection: between that device and the hub.
- Other advantages include robustness. If one link fails, only that link is affected. All other links remain active. This factor also lends itself to easy fault identification and fault isolation. As long as the hub is working, it can be used to monitor link problems and bypass defective links.

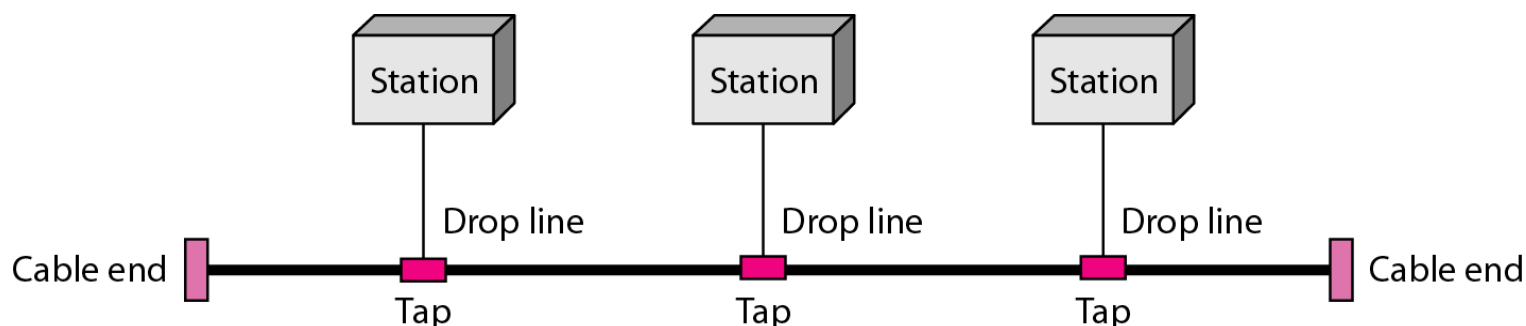


- One big disadvantage of a star topology is the dependency of the whole topology on one single point, the hub. If the hub goes down, the whole system is dead.
- Although a star requires far less cable than a mesh, each node must be linked to a central hub. For this reason, often more cabling is required in a star than in some other topologies (such as ring or bus)

Basic Topology (3)

• Bus Topology

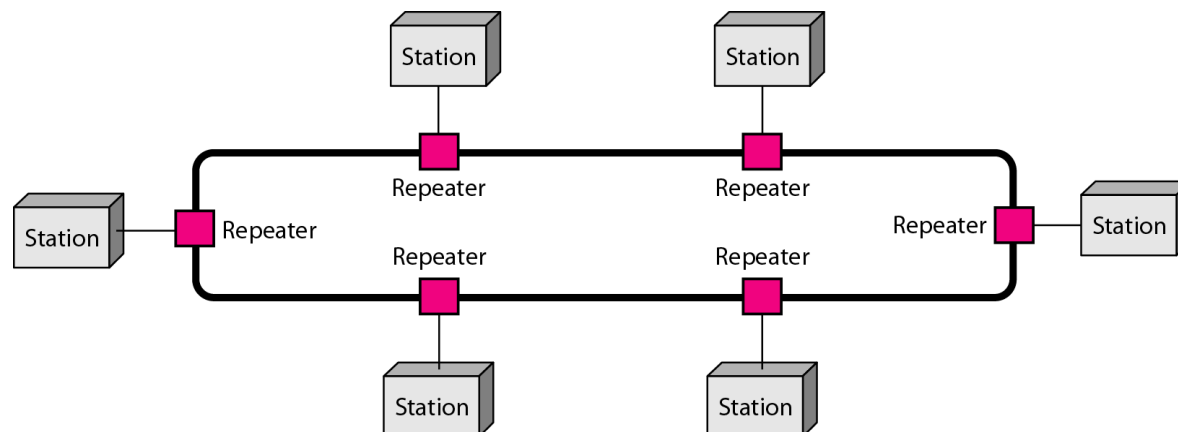
- The preceding examples all describe point-to-point connections. A bus topology, on the other hand, is multipoint. One long cable acts as a backbone to link all the devices in a network.
- Nodes are connected to the bus cable by drop lines and taps. A drop line is a connection running between the device and the main cable. A tap is a connector that either splices into the main cable or punctures the sheathing of a cable to create a contact with the metallic core. As a signal travels along the backbone, some of its energy is transformed into heat. Therefore, it becomes weaker and weaker as it travels farther and farther. For this reason there is a limit on the number of taps a bus can support and on the distance between those taps.
- Advantages of a bus topology include ease of installation. Backbone cable can be laid along the most efficient path, then connected to the nodes by drop lines of various lengths. In this way, a bus uses less cabling than mesh or star topologies. In a star, for example, four network devices in the same room require four lengths of cable reaching all the way to the hub. In a bus, this redundancy is eliminated. Only the backbone cable stretches through the entire facility. Each drop line has to reach only as far as the nearest point on the backbone.
- Disadvantages include difficult reconnection and fault isolation. In addition, a fault or break in the bus cable stops all transmission, even between devices on the same side of the problem. The damaged area reflects signals back in the direction of origin, creating noise in both directions.
- Bus topology was the one of the first topologies used in the design of early local- area networks. Ethernet LANs can use a bus topology, but they are less popular now for reasons we will discuss in Chapter 13.



Basic Topology (4)

• Ring Topology

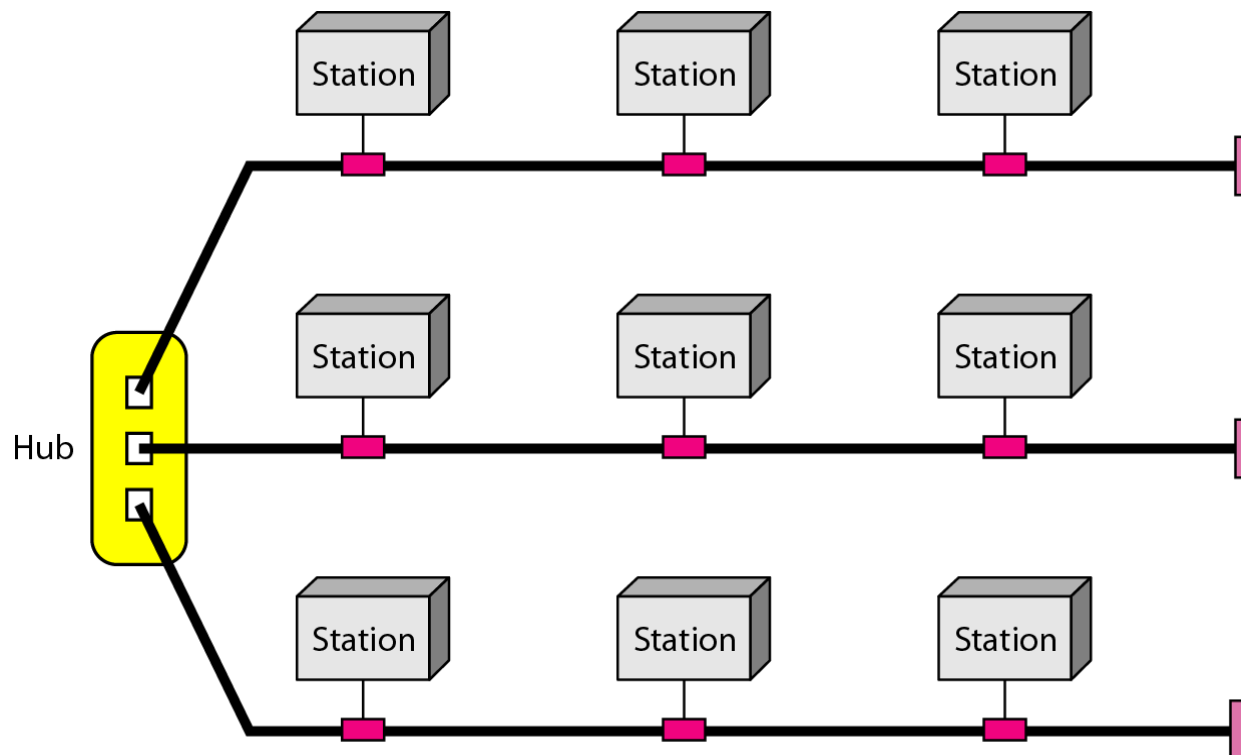
- In a ring topology, each device has a dedicated point-to-point connection with only the two devices on either side of it. A signal is passed along the ring in one direction, from device to device, until it reaches its destination. Each device in the ring incorporates a repeater. When a device receives a signal intended for another device, its repeater regenerates the bits and passes them along
- A ring is relatively easy to install and reconfigure. Each device is linked to only its immediate neighbors (either physically or logically). To add or delete a device requires changing only two connections. The only constraints are media and traffic considerations (maximum ring length and number of devices). In addition, fault isolation is simplified.
- Generally in a ring, a signal is circulating at all times. If one device does not receive a signal within a specified period, it can issue an alarm. The alarm alerts the network operator to the problem and its location.
- However, unidirectional traffic can be a disadvantage. In a simple ring, a break in the ring (such as a disabled station) can disable the entire network. This weakness can be solved by using a dual ring or a switch capable of closing off the break.



Basic Topology (5)

- **Hybrid Topology**

- A network can be hybrid. For example, we can have a main star topology with each branch connecting several stations in a bus topology

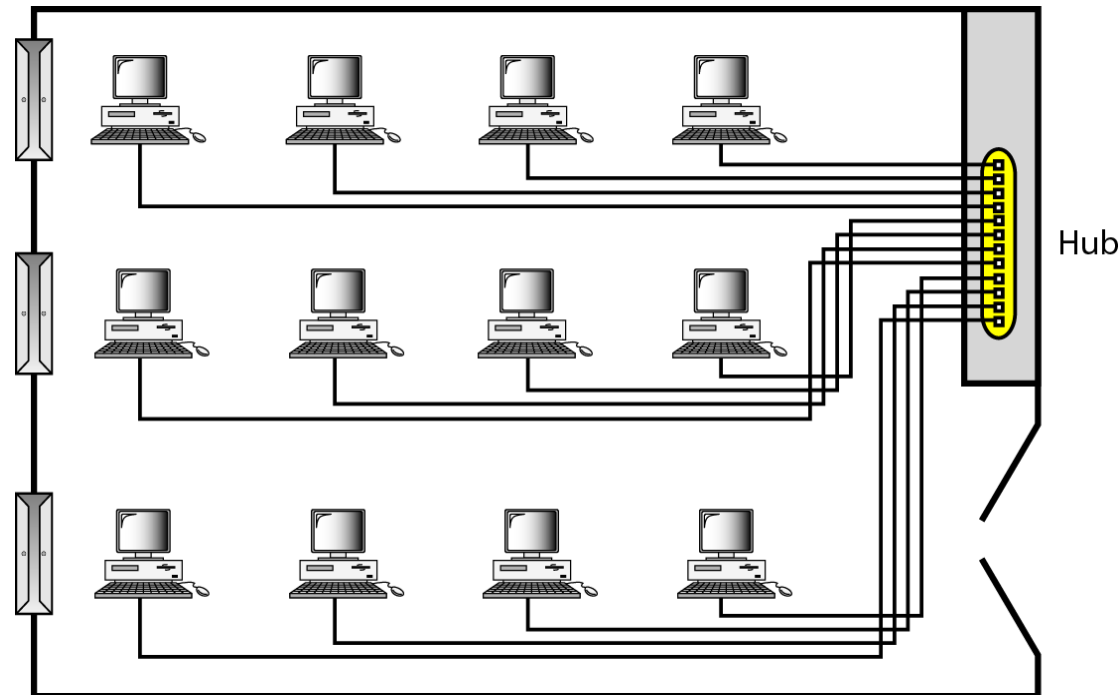


Network Models

- Computer Networks are created by different entities. Standards are needed so that these heterogeneous networks can communicate with one another.
- Two best known standards are the OSI Model and the Internet Model.
- The OSI (Open Systems Interconnection) model defines a seven-layer network; the Internet model defines a five layer network.
- Categories of Networks determined by its size:
 - **LAN (Local Area Network)**
 - **WAN (Wide Area Network)**

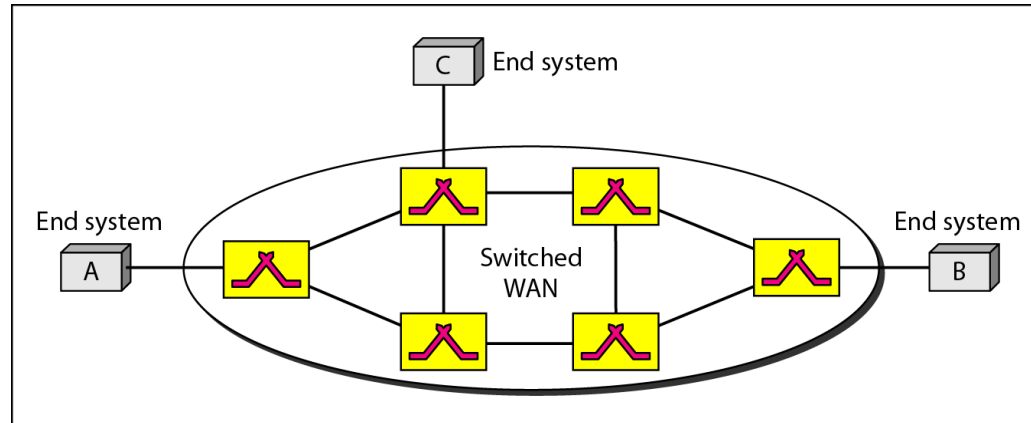
Local Area Network (LAN)

- LANs are designed to allow resources to be shared between personal computers or workstations. The resources to be shared can include hardware (e.g., a printer), software (e.g., an application program), or data. A common example of a LAN, found in many business environments, links a workgroup of task-related computers, for example, engineering workstations or accounting PCs.
- Early LANs had data rates in the 4 to 16 megabits per second (Mbps) range. Today, however, speeds are normally 100 or 1000 Mbps.

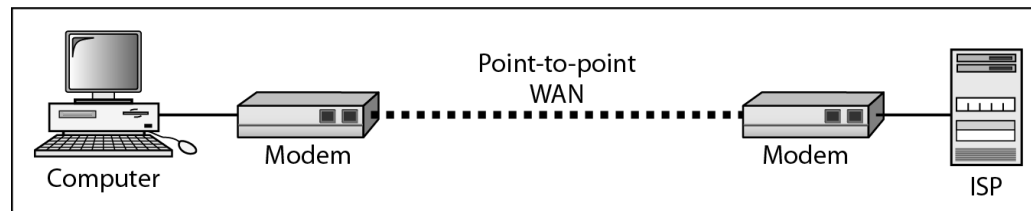


Wide Area Network

- A WAN can be as complex as the backbones that connect the Internet or as simple as a dial-up line that connects a home computer to the Internet. We normally refer to the first as a switched WAN and to the second as a point-to-point WAN



a. Switched WAN

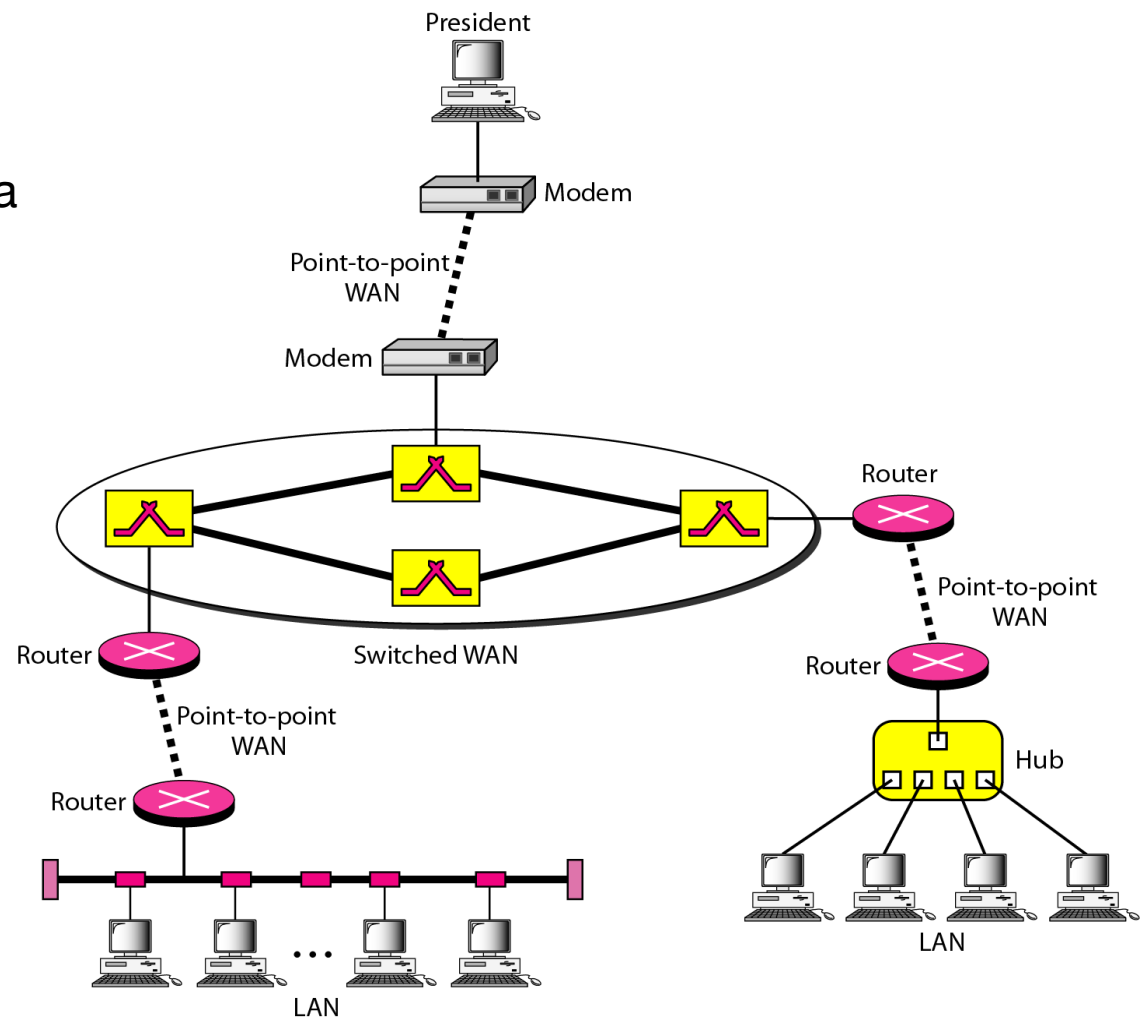


b. Point-to-point WAN

- The switched WAN connects the end systems, which usually comprise a router (internet- working connecting device) that connects to another LAN or WAN.
- The point-to-point WAN is normally a line leased from a telephone or cable TV provider that connects a home computer or a small LAN to an Internet service provider (ISP). This type of WAN is often used to provide Internet access.
- An early example of a switched WAN is X.25, a network designed to provide connectivity between end users. X.25 is being gradually replaced by a high-speed, more efficient network called Frame Relay. A good example of a switched WAN is the asynchronous transfer mode (ATM) network, which is a network with fixed-size data unit packets called cells.

Interconnection of Networks: Internet

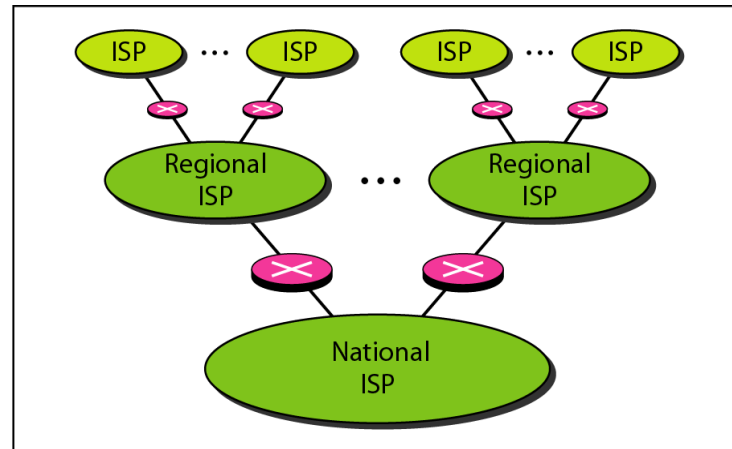
- When two or more networks are connected, they become an internetwork or internet.
- To connect the LANs to this switched WAN, however, three point-to-point WANs are required. These point-to-point WAN can be a high speed DSL line offered by telephone company or a cable modem line offered by a cable TV provider



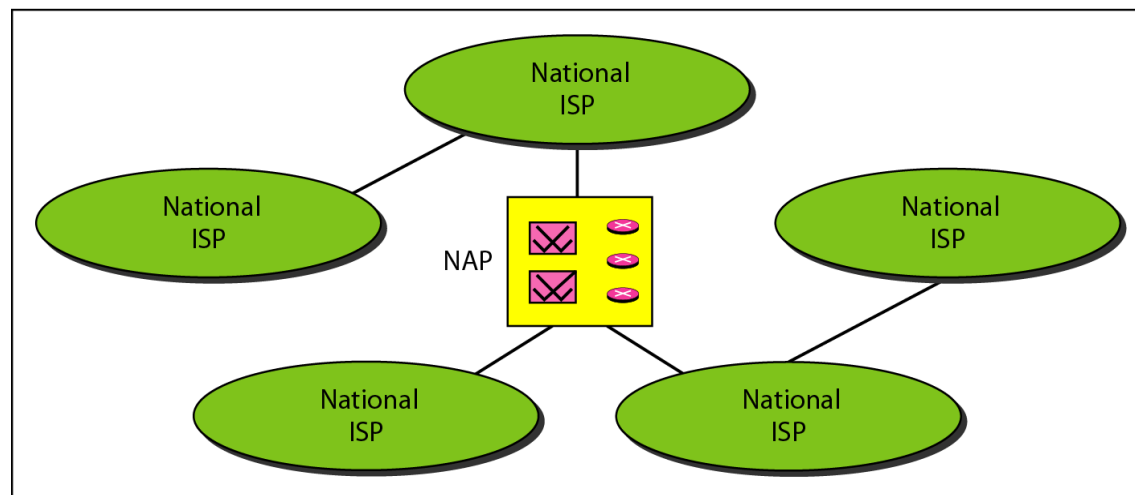
The Internet

- The Internet has come a long way since the 1960s. The Internet today is not a simple hierarchical structure. It is made up of many wide- and local-area networks joined by connecting devices and switching stations. It is difficult to give an accurate representation of the Internet because it is continually changing-new networks are being added, existing networks are adding addresses, and networks of defunct companies are being removed. Today most end users who want Internet connection use the services of Internet service providers (ISPs). There are international service providers, national service providers, regional service providers, and local service providers. The Internet today is run by private companies, not the government.

Hierarchical organization of the Internet



a. Structure of a national ISP



b. Interconnection of national ISPs

Protocol and Standards (1)

- **Protocol** is synonymous with rule. **Standards** are agreed-upon rules
- Protocol
 - In computer networks, communication occurs between entities in different systems. An entity is anything capable of sending or receiving information. However, two entities cannot simply send bit streams to each other and expect to be understood. For communication to occur, the entities must agree on a protocol. A protocol is a set of rules that govern data communications. A protocol defines what is communicated, how it is communicated, and when it is communicated. The key elements of a protocol are syntax, semantics, and timing.
 - **Syntax.** The term syntax refers to the structure or format of the data, meaning the order in which they are presented. For example, a simple protocol might expect the first 8 bits of data to be the address of the sender, the second 8 bits to be the address of the receiver, and the rest of the stream to be the message itself.
 - **Semantics.** The word semantics refers to the meaning of each section of bits. How is a particular pattern to be interpreted, and what action is to be taken based on that interpretation? For example, does an address identify the route to be taken or the final destination of the message?
 - **Timing.** The term timing refers to two characteristics: when data should be sent and how fast they can be sent. For example, if a sender produces data at 100 Mbps but the receiver can process data at only 1 Mbps, the transmission will overload the receiver and some data will be lost.

Protocol and Standards (2)

- **Standards**
 - Standards are essential in creating and maintaining an open and competitive market for equipment manufacturers and in guaranteeing national and international interoperability of data and telecommunications technology and processes. Standards provide guidelines to manufacturers, vendors, government agencies, and other service providers to ensure the kind of interconnectivity necessary in today's marketplace and in international communications. Data communication standards fall into two categories: de facto (meaning "by fact" or "by convention") and de jure (meaning "by law" or "by regulation").
 - **De facto.** Standards that have not been approved by an organized body but have been adopted as standards through widespread use are de facto standards. De facto standards are often established originally by manufacturers who seek to define the functionality of a new product or technology.
 - **De jure.** Those standards that have been legislated by an officially recognized body are de jure standards.

Standards Committees (1)

- While many organizations are dedicated to the establishment of standards, data telecommunications in North America rely primarily on those published by the following:
 - **International Organization for Standardization (ISO).** The ISO is a multinational body whose membership is drawn mainly from the standards creation committees of various governments throughout the world. The ISO is active in developing cooperation in the realms of scientific, technological, and economic activity.
 - **International Telecommunication Union-Telecommunication Standards Sector (ITU-T).** By the early 1970s, a number of countries were defining national standards for telecommunications, but there was still little international compatibility. The United Nations responded by forming, as part of its International Telecommunication Union (ITU), a committee, the Consultative Committee for International Telegraphy and Telephony (CCITT). This committee was devoted to the research and establishment of standards for telecommunications in general and for phone and data systems in particular. On March 1, 1993, the name of this committee was changed to the International Telecommunication Union- Telecommunication Standards Sector (ITU-T).

Standards Committees (2)

- **American National Standards Institute (ANSI).** Despite its name, the American National Standards Institute is a completely private, nonprofit corporation not affiliated with the U.S. federal government. However, all ANSI activities are undertaken with the welfare of the United States and its citizens occupying primary importance.
- **Institute of Electrical and Electronics Engineers (IEEE).** The Institute of Electrical and Electronics Engineers is the largest professional engineering society in the world. International in scope, it aims to advance theory, creativity, and product quality in the fields of electrical engineering, electronics, and radio as well as in all related branches of engineering. As one of its goals, the IEEE oversees the development and adoption of international standards for computing and communications.
- **Electronic Industries Association (EIA).** Aligned with ANSI, the Electronic Industries Association is a nonprofit organization devoted to the promotion of electronics manufacturing concerns. Its activities include public awareness education and lobbying efforts in addition to standards development. In the field of information technology, the EIA has made significant contributions by defining physical connection interfaces and electronic signaling specifications for data communication.

Standards Committees (3)

- **Forums**

- Telecommunications technology development is moving faster than the ability of standards committees to ratify standards. Standards committees are procedural bodies and by nature slow-moving. To accommodate the need for working models and agreements and to facilitate the standardization process, many special-interest groups have developed forums made up of representatives from interested corporations. The forums work with universities and users to test, evaluate, and standardize new technologies. By concentrating their efforts on a particular technology, the forums are able to speed acceptance and use of those technologies in the telecommunications community. The forums present their conclusions to the standards bodies.

- **Regulatory Agencies**

- All communications technology is subject to regulation by government agencies such as the Federal Communications Commission (FCC) in the United States. The purpose of these agencies is to protect the public interest by regulating radio, television, and wire/cable communications. The FCC has authority over interstate and international commerce as it relates to communications.

Summary (1)

- Data communication are the transfer of data from one device to another via some form of transmission medium
- A data communication system must transmit data to the correct destination in a accurate and timely manner
- The five components that make up a data communication system are the message, sender, receiver, medium and protocol
- Text, number, images, audio and video are different forms of information
- Data flow between two devices connected by media links
- In a point-to-point connection, two and only two devices are connected by a dedicated link. In a multipoint connection three or more devices share a link
- Topology refers to the physical or logical management of a network. Devices may be arranged in a mesh, star, bus, or ring topology
- A network can be categorized as a local area network or a wide area network
- A LAN is a data communication system within a building, plant, or campus, or between nearby building
- A WAN is a data communication system spanning states, countries, or the whole world

Summary (2)

- A protocol is a set of rules that overns data communication; the key elements of a protocol are syntax, semantics, and timing.
- Standards are necessary to ensure that products from different manufacturers can work together as expected
- The ISO, ITU-T, ANSI, IEEE, and EIA are some of the organization involved in standards creation
- Forums are special-interest groups that quickly evaluate and standardize new technologies
- A Request for Comment is an idea or concept that is a precursor to an Internet standard

Exercises

1. What is the maximum number of characters or symbols that can be represented by Unicode?
2. A color image uses 16 bits to represent a pixel. What is the maximum number of different colors that can be represented?
3. Assume six devices are arranged in a mesh topology. How many cables are needed? How many ports are needed for each devices?
4. Performance is inversely related to delay. When you use the Internet, which of the following application are more sensitive to delay?
 - a. Sending an email
 - b. Copying a file
 - c. Surfing the Internet
5. When a party makes a local telephone call to another party, is this a point to point or multipoint connection? Explain your answer.