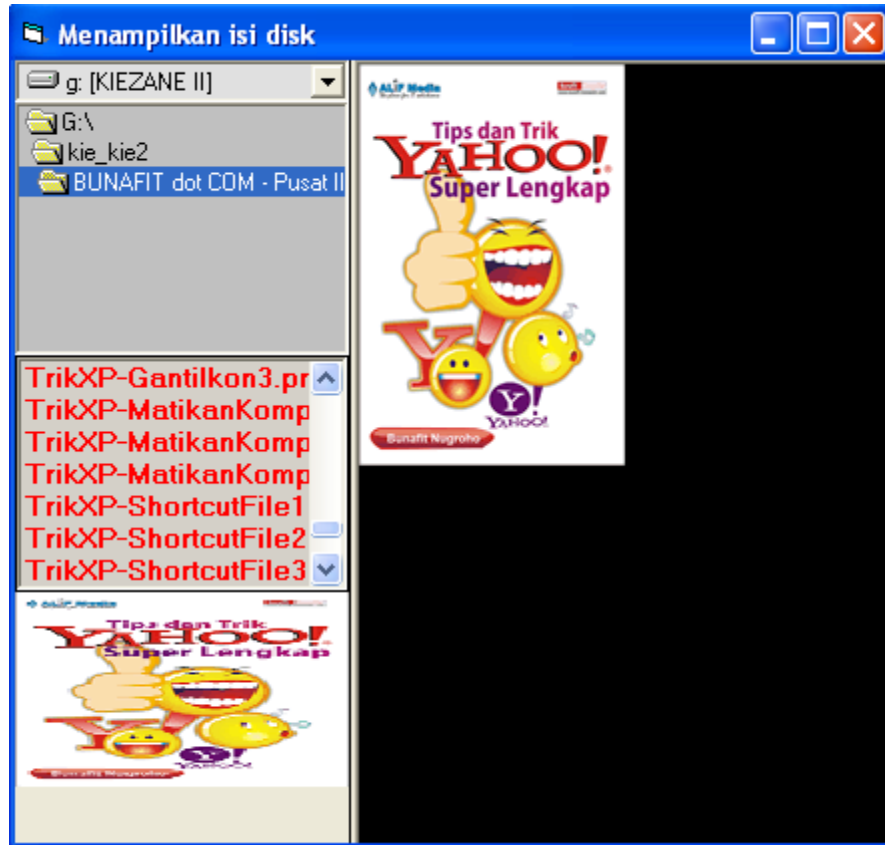


## image viewer+menampilkan isi file dalam drive penyimpanan



pada latihan evaluasi kali ini akan di bahasa mengenai pembuatan sebuah aplikasi sederhana berupa image viewer dengan akses file image (\*.jpg,\*.bmp,\*.gif,dll) praktikkan dapat melihat file image dalam ada dalam drive penyimpanan di komputer

berikut ialah konfigurasinya :

Komponen	propertis	Value / nilai
Drive List Box	Name	MyDrive
Dir List Box	Name	MyDir
File list box	name Forecolour	MyFile &H8000000A&
image	Name appearance	image1 0-flat
Picture box	name backcolour	gambar &H00000000&
Line	name	pemisah

Berikut ialah kode programnya :

```

Dim LebarTempatGambar As Integer
Dim TinggiTempatGambar As Integer
Dim PosisiKiriGambar As Integer
Dim PosisiAtasGambar As Integer
Private Sub HitungPosisi()
MyDrive.Top = 0
MyDrive.Left = 0
MyDrive.Width = 2500
MyDir.Top = MyDrive.Height
MyDir.Left = 0
MyDir.Width = 2500
MyDir.Height = Me.ScaleHeight \ 3
MyFile.Top = MyDir.Top + MyDir.Height
MyFile.Left = 0
MyFile.Width = 2500
MyFile.Height = Me.ScaleHeight \ 3
Image1.Top = MyFile.Top + MyFile.Height
Image1.Left = 0
Image1.Width = 2500
Image1.Height = Me.ScaleHeight \ 4
Pemisah.Y1 = 0
Pemisah.Y2 = Me.ScaleHeight
Pemisah.X1 = MyDrive.Width + 1
Pemisah.X2 = MyDrive.Width + 1
PosisiAtasGambar = 0
PosisiKiriGambar = Pemisah.X1 + 50
TinggiTempatGambar = Me.ScaleHeight
LebarTempatGambar = Me.ScaleWidth - PosisiKiriGambar
End Sub
Private Sub BuatGambarKeTengah()
If gambar.Width < LebarTempatGambar Then
gambar.Left = PosisiKiriGambar + (LebarTempatGambar -gambar.Width)\ 2
Else

```

```

gambar.Left = PosisiKiriGambar
End If

If gambar.Height < TinggiTempatGambar Then
gambar.Top = PosisiAtasGambar + (TinggiTempatGambar -
gambar.Height) \ 2
Else
gambar.Top = PosisiAtasGambar
End If

End Sub

Private Sub Form_Load()
MyFile.Pattern = "*.bmp;*.gif;*.jpg;*.wmf;*.ico;*.png"
End Sub

Private Sub Form_Resize()
Call HitungPosisi
Call BuatGambarKeTengah
End Sub

Private Sub MyDrive_Change()
MyDir.Path = MyDrive.Drive
End Sub

Private Sub MyDir_Change()
MyFile.Path = MyDir.Path
End Sub

Private Sub MyFile_Click()
Dim fname As String
If Right(MyFile.Path, 1) = "\" Then
fname = MyFile.Path & MyFile.FileName
Else
fname = MyFile.Path & "\" & MyFile.FileName
End If

gambar.Visible = False
gambar.Picture = LoadPicture(fname)
Call BuatGambarKeTengah
gambar.Visible = True

```

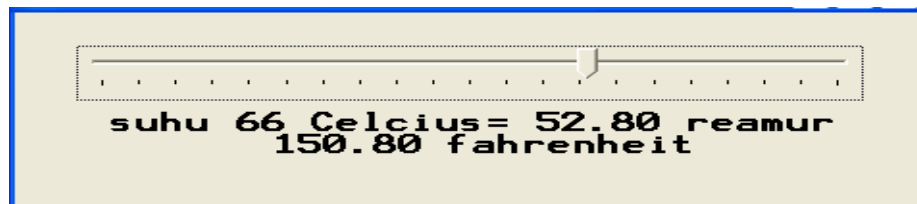
```

SelectedFile = MyFile.Path & "\" & MyFile.FileName
Image1.Stretch = True
Image1.Picture = LoadPicture(SelectedFile)
ImgWidth = Image1.Width
ImgHeight = Image1.Height
End Sub

```

## latihan 2

### penggunaan track bar / slider



```

Private Sub Form_Load()
Slider1.Min = 0
Slider1.Max = 100
Slider1.SmallChange = 1
Slider1.LargeChange = 1
Slider1.TickFrequency = 5
Slider1.Value = 0
End Sub

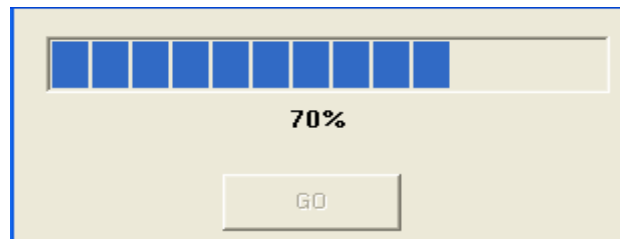
Private Sub Slider1_Change()
Dim reamur As Single
Dim fahrenheit As Single
reamur = 4 / 5 * Slider1.Value
fahrenheit = 9 / 5 * Slider1.Value + 32
Label1.Caption = "suhu " & Slider1.Value & " Celcius= " & Format(reamur,
"0.00") & " reamur " & Format(fahrenheit, "0.00") & " fahrenheit"
End Sub

```

komponen	property	Nilai / value
slider	name	slider1
label	name	label1

## LATIHAN 3

## Penggunaan timer & Progress Bar



Komponen	Property	Value / Nilai
Progress Bar	Name appearance	Pbr1 1-cc3d
Label	name	Label1
Command Button	name	command1
Timer	Name interval	Timer1 100

### **Private Sub Command1\_Click()**

```
Command1.Enabled = False
```

```
pbr1.Value = pbr1.Min
```

```
pbr1.Visible = True
```

```
Timer1.Enabled = True
```

### **End Sub**

### **Private Sub Form\_Load()**

```
Label1.Caption = ""
```

```
pbr1.Min = 0
```

```
pbr1.Max = 100
```

```
pbr1.Tag = 1
```

```
pbr1.Visible = False
```

```
Timer1.Enabled = False
```

### **End Sub**

### **Private Sub Timer1\_Timer()**

```
pbr1.Value = pbr1.Value + 10
```

```
Label1.Caption = pbr1.Value * pbr1.Max / 100 & "%"
```

```
If pbr1.Value = pbr1.Max Then
```

```
Command1.Enabled = True
```

```
Timer1.Enabled = False
```

```
MsgBox "inisialisasi selesai...anda ingin lanjut??", vbInformation
```

```

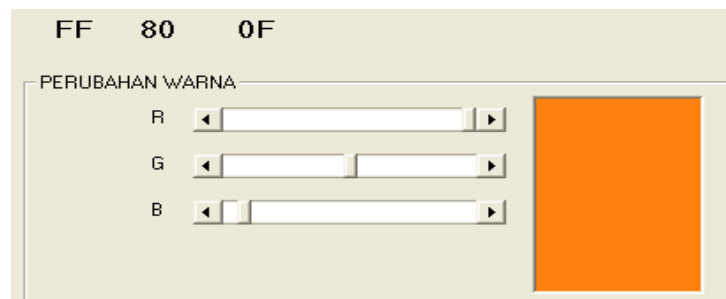
Form1.Show
Unload Me
Exit Sub
End If
End Sub

```

## LATIHAN 4

### Penggunaan HscrollBar

Komponen	Property	Value / Nilai
HscrollBar	Name	ScrHighR ScrHighG ScrHighB
Picture Box	Name	pbxHighCol
Frame	Name	Frame2
Label	Name	Label3, Label2, Label1



```

Private Sub Form_Load()
    Label1.Caption = "00"
    Label2.Caption = "00"
    Label3.Caption = "00"
End Sub

Private Sub scrHighB_Change()
    pbxHighCol.BackColor = RGB(scrHighR.Value, scrHighG.Value,
scrHighB.Value)
    If scrHighR.Value <= 15 Then
        Label1.Caption = "0" & Hex(scrHighR.Value)
    Else
        Label1.Caption = Hex(scrHighR.Value)
    End If

```

End If

**End Sub**

**Private Sub scrHighG\_Change()**

pbxHighCol.BackColor = RGB(scrHighR.Value, scrHighG.Value,  
scrHighB.Value)

If scrHighG.Value <= 15 Then

Label2.Caption = "0" & Hex(scrHighG.Value)

Else

Label2.Caption = Hex(scrHighG.Value)

End If

**End Sub**

**Private Sub scrHighR\_Change()**

pbxHighCol.BackColor = RGB(scrHighR.Value, scrHighG.Value,  
scrHighB.Value)

If scrHighR.Value <= 15 Then

Label3.Caption = "0" & Hex(scrHighR.Value)

Else

Label3.Caption = Hex(scrHighR.Value)

End If

**End Sub**