

Bab 7. Seni Presentasi

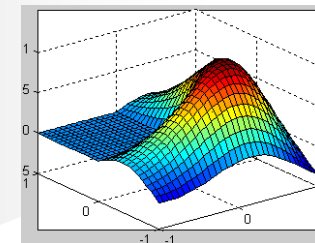
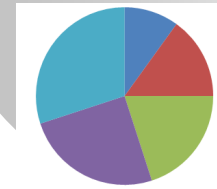
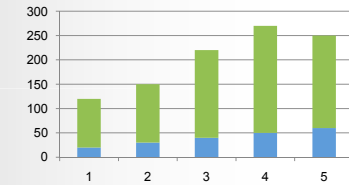
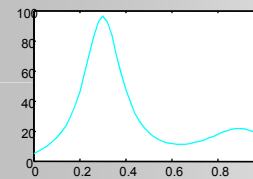
It is not what you say, but how you say it.
—A. Putt

Dr. Yeffry Handoko Putra, M.T

1

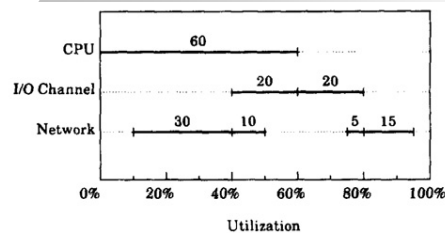
Art of Presentation

- ❖ Memadukan gambar, kata-kata dan grafik untuk menjelaskan hasil dan analisis
- ❖ Jenis Grafik :

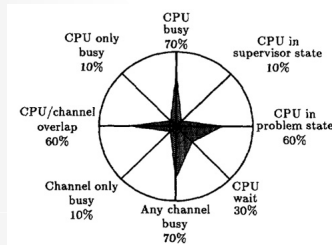


2

Graph for Computer Analysis



Gantt Chart

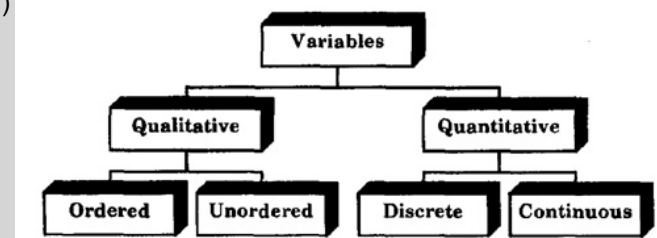


Kiviat Graph

3

Type of Variables

- ❖ Variabel Kuantitatif:
Menyatakan nilai secara numerik
 - Variabel Diskrit
 - Variabel Kontinu
- ❖ Variabel Kualitatif :
Menentukan kelas, level atau kategori
 - Terurut (ordered)
 - Tidak terurut (unordered)



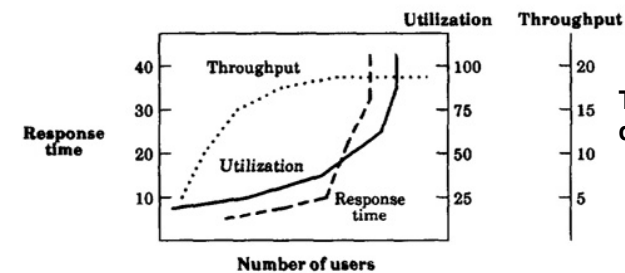
4

GUIDELINES FOR PREPARING GOOD GRAPHIC CHARTS

- ❖ Mudah dimengerti (*Require Minimum Effort from the Reader*)
- ❖ Informasi yang lengkap
- ❖ Sesuai dengan pendidikan audience
- ❖ Pemilihan tinta dan warna yang tepat
- ❖ Gunakan aturan baku penulisan dan penempatan grafik
- ❖ Hindari kerancuan (Ambiguity) pada labeling

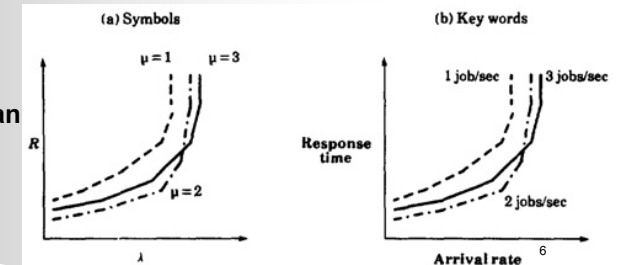
5

Example for graph that hard to read



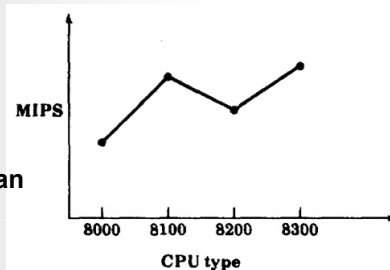
Terlalu banyak variabel yg diplot

Simbol tanpa keterangan
Skala yang salah



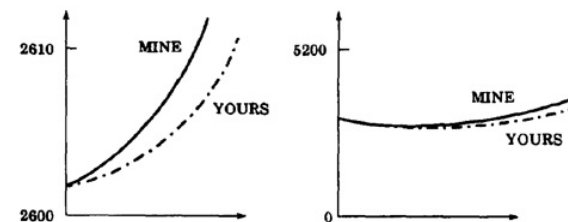
Line Chart yang tidak tepat
Harusnya pakai column chart

Informasi ekstra yang berlebihan

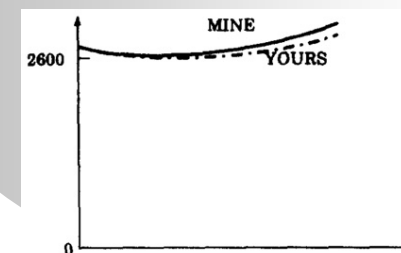


7

Permainan Gambar (Pictures Games)



Menggunakan titik
origin tidak nol untuk
meyakinkan perbedaan

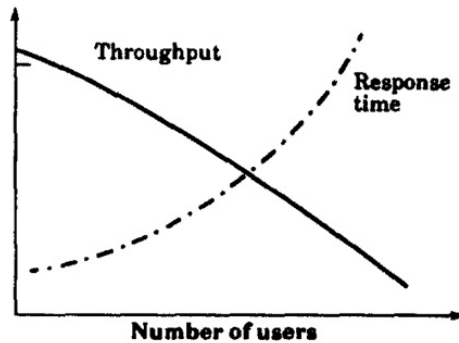


Cara yang tepat

8



Permainan Gambar (Picture Games)

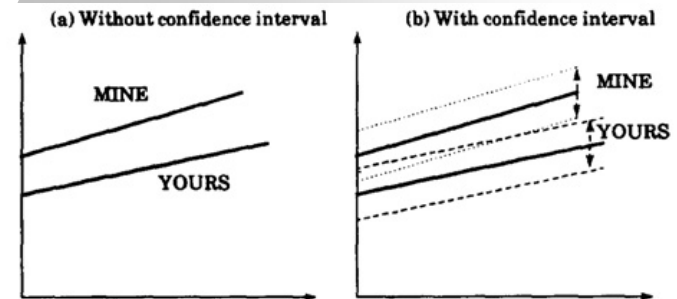


Dua graph dalam satu picture bisa memperkuat / memperlemah dampak

9



Permainan Gambar (Picture Games)



Ekperimen random dari beberapa kali percobaan tidak disertai dengan mean (confidence interval)

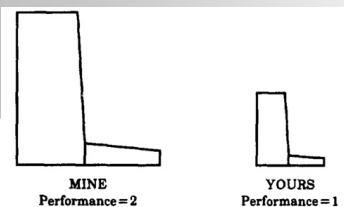
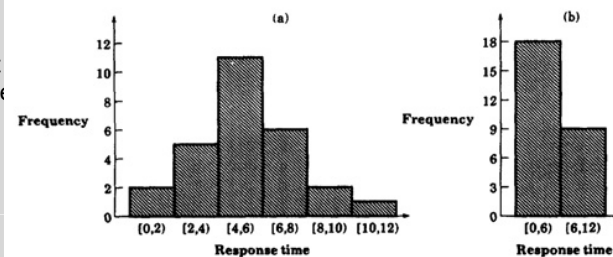
10



Permainan Gambar (Picture Games)



Ukuran sel yang tidak tepat
-too small or too big cell size

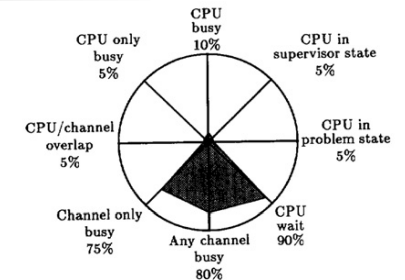
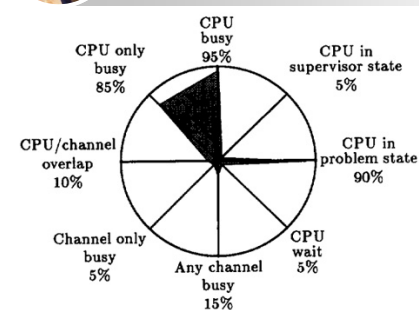


Skala yang berbeda

11



Contoh Kiviart Graph



I/O wedge

CPU keelboat

Analisa dengan Figure of Merit (FOM)

$$FOM = \left[\frac{1}{2n} \sum_{i=1}^n (x_{2i-1} + x_{2i+1})(100 - x_{2i}) \right]^{1/2}$$

12



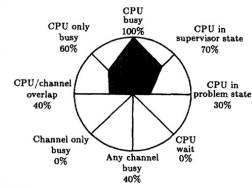
Contoh FOM pada Kiviat Chart



System	x_1	x_2	x_3	x_4	x_5	x_6	x_7	x_8
A	100	60	40	0	40	0	40	60
B	70	30	40	30	70	30	40	30

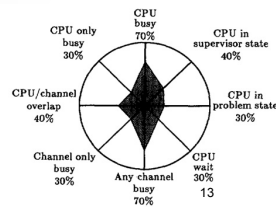
Untuk sistem A

$$\begin{aligned}
 FOM_A &= \left[\frac{1}{8} \{ (100 + 40)(100 - 60) + (40 + 40)(100 - 0) \right. \\
 &\quad \left. + (40 + 40)(100 - 0) + (40 + 100)(100 - 60) \} \right]^{1/2} \\
 &= \left[\frac{5600 + 8000 + 8000 + 5600}{8} \right]^{1/2} \\
 &= \sqrt{\frac{27,200}{8}} = 58
 \end{aligned}$$



Untuk sistem B

$$\begin{aligned}
 FOM_B &= \left[\frac{1}{8} \{ (70 + 40)(100 - 30) + (40 + 70)(100 - 30) \right. \\
 &\quad \left. + (70 + 40)(100 - 30) + (40 + 70)(100 - 30) \} \right]^{1/2} \\
 &= \left[\frac{7700 + 7700 + 7700 + 7700}{8} \right]^{1/2} \\
 &= \sqrt{\frac{30,800}{8}} = 62
 \end{aligned}$$



SCHUMACHER CHARTS



Management indicator	Network bandwidth wasted			Explanation
	% packets lost	% packets with errors	% packets out of order	
+3				1. Link failure
+2				
+1				
Mean				Normal
-1				
-2				Explain
-3				
This week	10.5%	3.2%	1.5%	
YTD mean	5.5%	3.5%	5.0%	
YTD low	0.5%	0.2%	1.5%	
YTD high	50.5%	32.2%	45.5%	
Goal	4%	1%	5%	

Untuk laporan periodik