



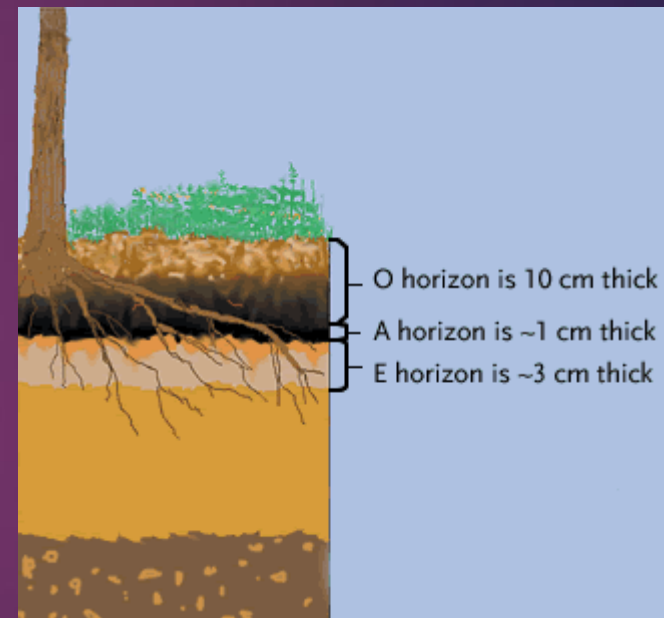
# KONSEP & DEFINISI

**LAHAN**

# Land=lahan, soil = tanah

- ▶ Land= lahan
- ▶ Bagian dari bumi yang tidak tertutup oleh air

## Lapisan tanah



# Landscape= bentang alam



# Urban landscape



Frankfurt



# Rural landscape



Di New Zealand

# Landform = bentuk lahan

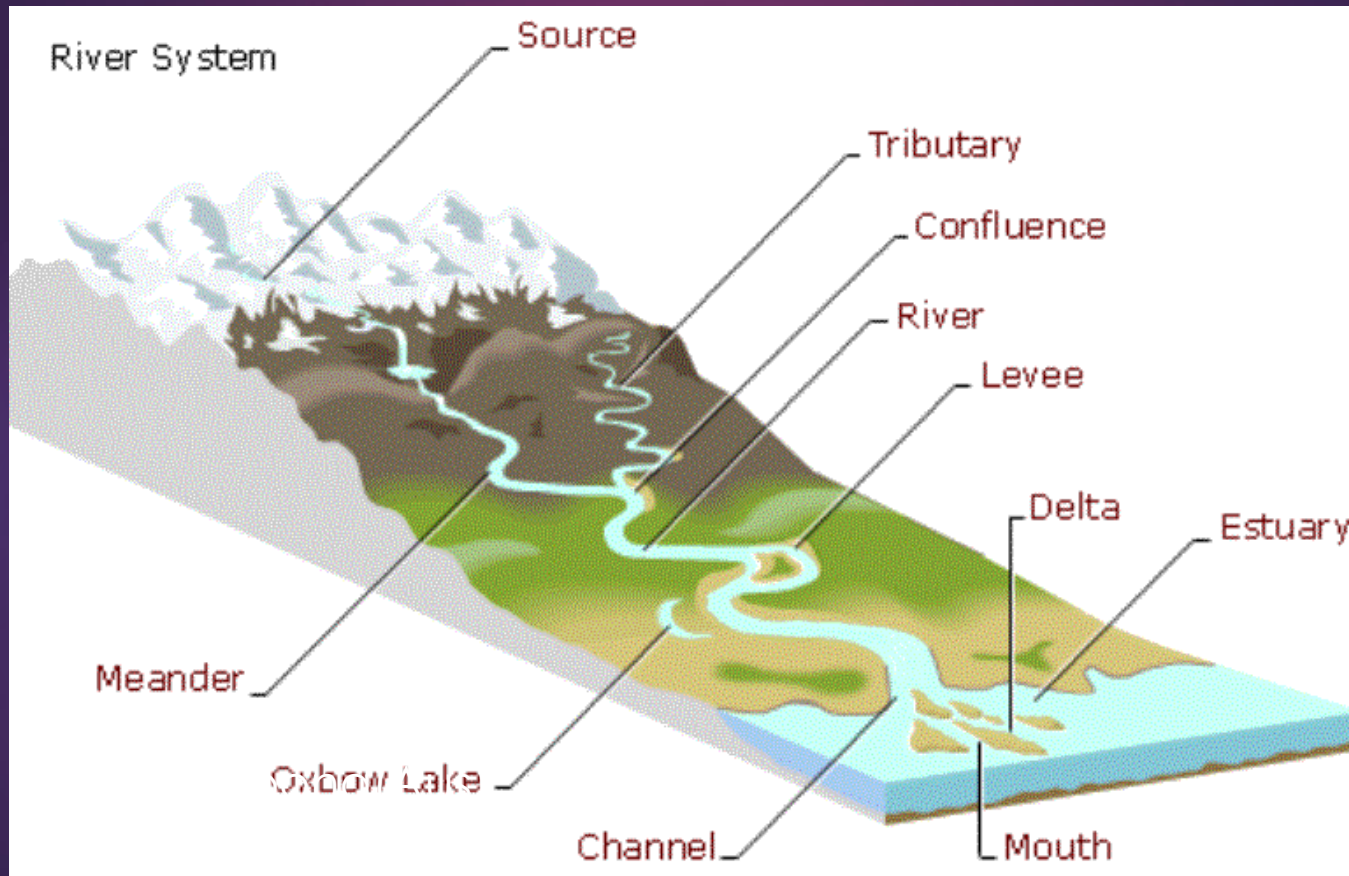
- ▶ Penampakan fisik yang terdiri atas unit geomorfologis, dan dinamakan berdasarkan bentuk permukaannya dan lokasi dari bentang alamnya sebagai bagian dari dataran yang merupakan bagian dari topografi.
- ▶ Bentuk lahan termasuk bentang laut, badan air, lautan, serta pertemuan daratan dan lautan seperti teluk dan semenanjung



# landform



# landform

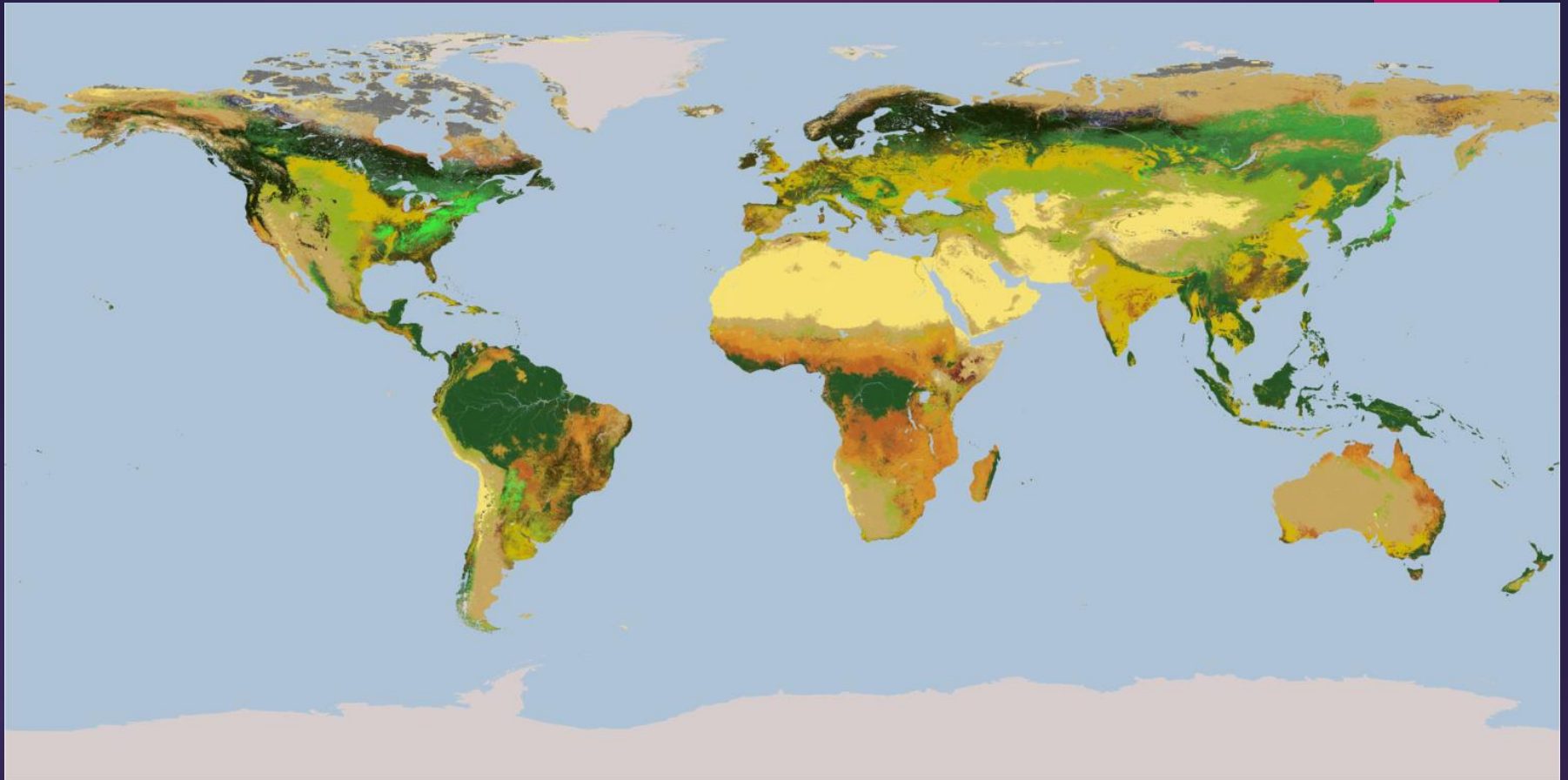




# Land cover = tutupan lahan

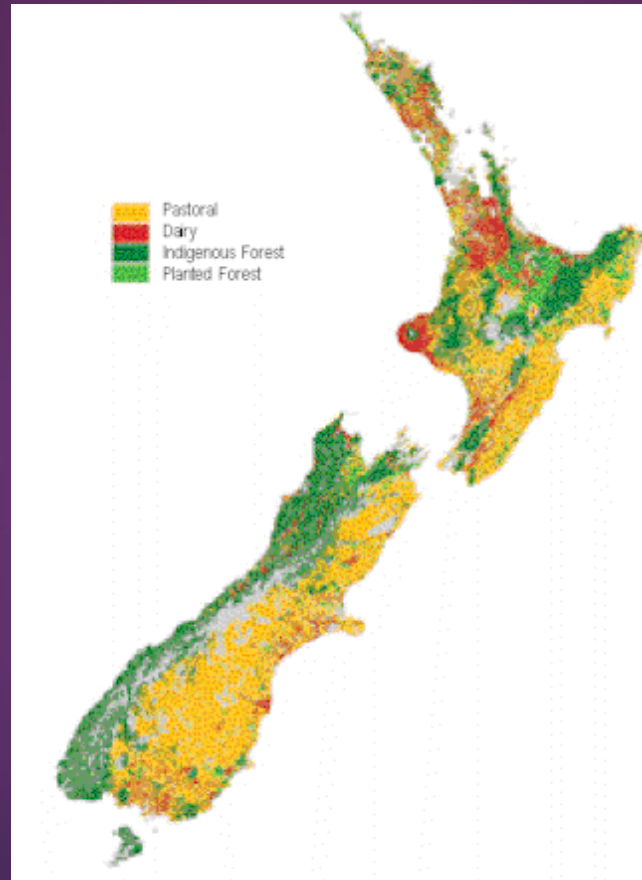
- ▶ Land cover = tutupan lahan :
- ▶ Material fisik di atas permukaan bumi
- ▶ Contoh:
- ▶ Rumput, pepohonan, air, aspal, bangunan
- ▶ Informasi land cover dari:
  - ▶ Survey lapangan langsung
  - ▶ Foto udara
  - ▶ Citra satelit

# Land cover dunia



- |                               |                       |                                 |
|-------------------------------|-----------------------|---------------------------------|
| 0 Water                       | 6 Closed Shrublands   | 12 Croplands                    |
| 1 Evergreen Needleleaf Forest | 7 Open Shrublands     | 13 Urban and Built-Up           |
| 2 Evergreen Broadleaf Forest  | 8 Woody Savannas      | 14 Cropland/Natural Veg. Mosaic |
| 3 Deciduous Needleleaf Forest | 9 Savannas            | 15 Snow and Ice                 |
| 4 Deciduous Broadleaf Forest  | 10 Grasslands         | 16 Barren or Sparsely Vegetated |
| 5 Mixed Forests               | 11 Permanent Wetlands | 17 Tundra                       |

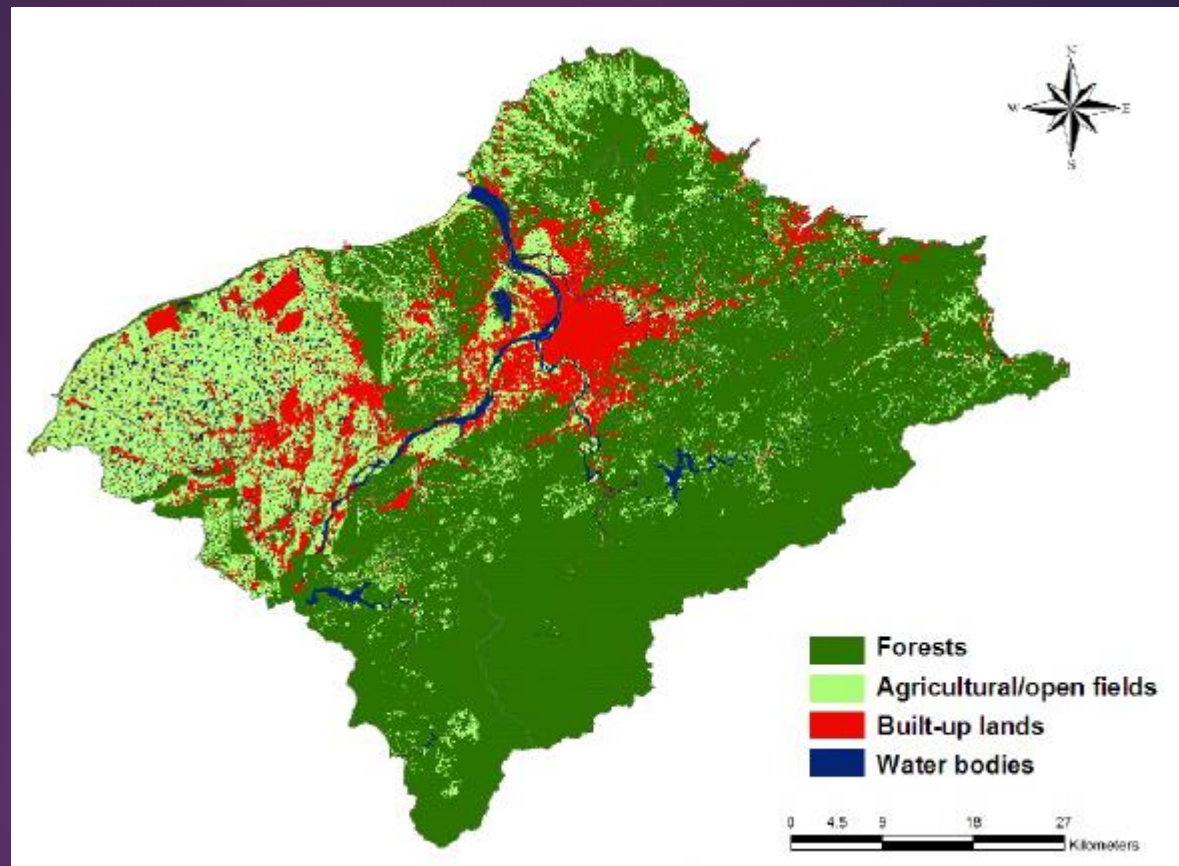
# Peta land cover



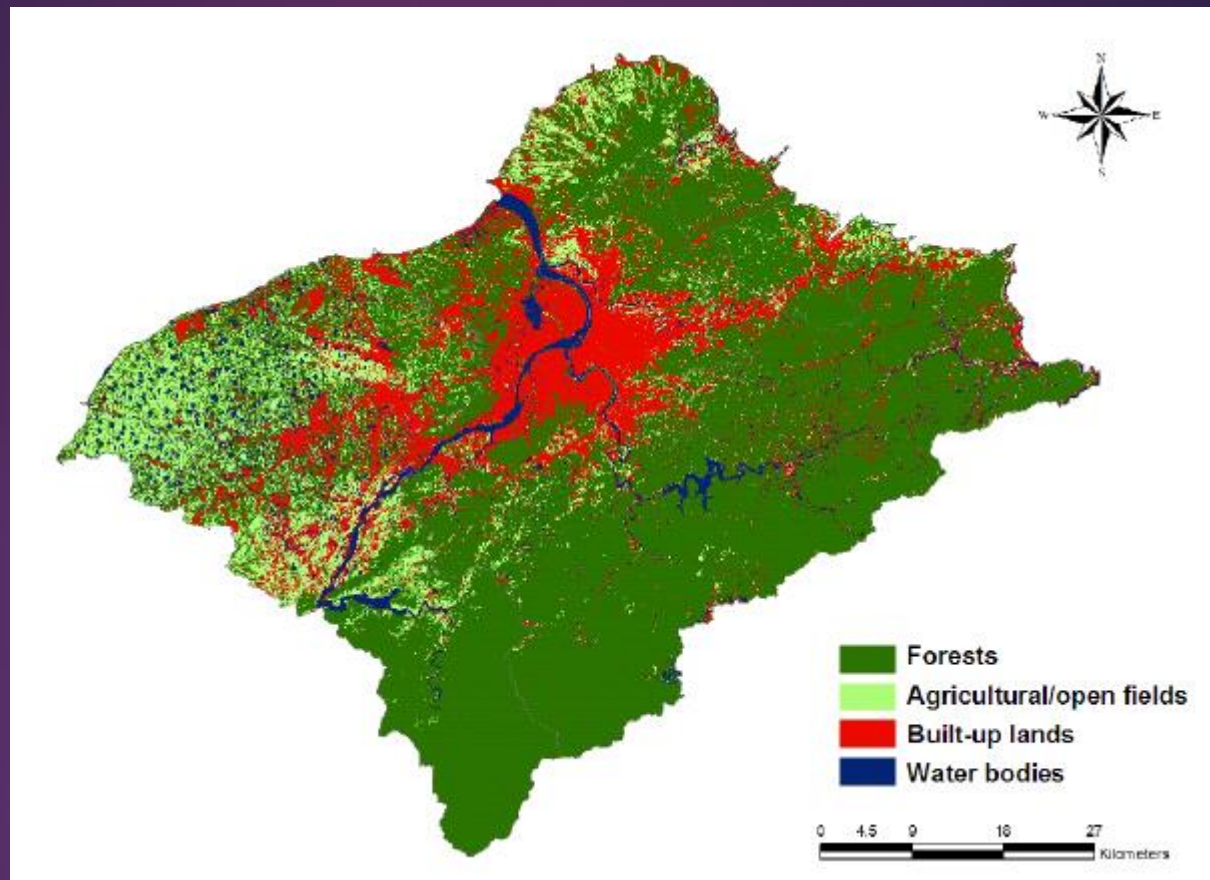


# Land cover change

- ▶ [http://web.ntpu.edu.tw/~shuli/PUGEC\\_07Casestudy\\_3.htm](http://web.ntpu.edu.tw/~shuli/PUGEC_07Casestudy_3.htm)
- ▶ Di Taipei-Taoyuan

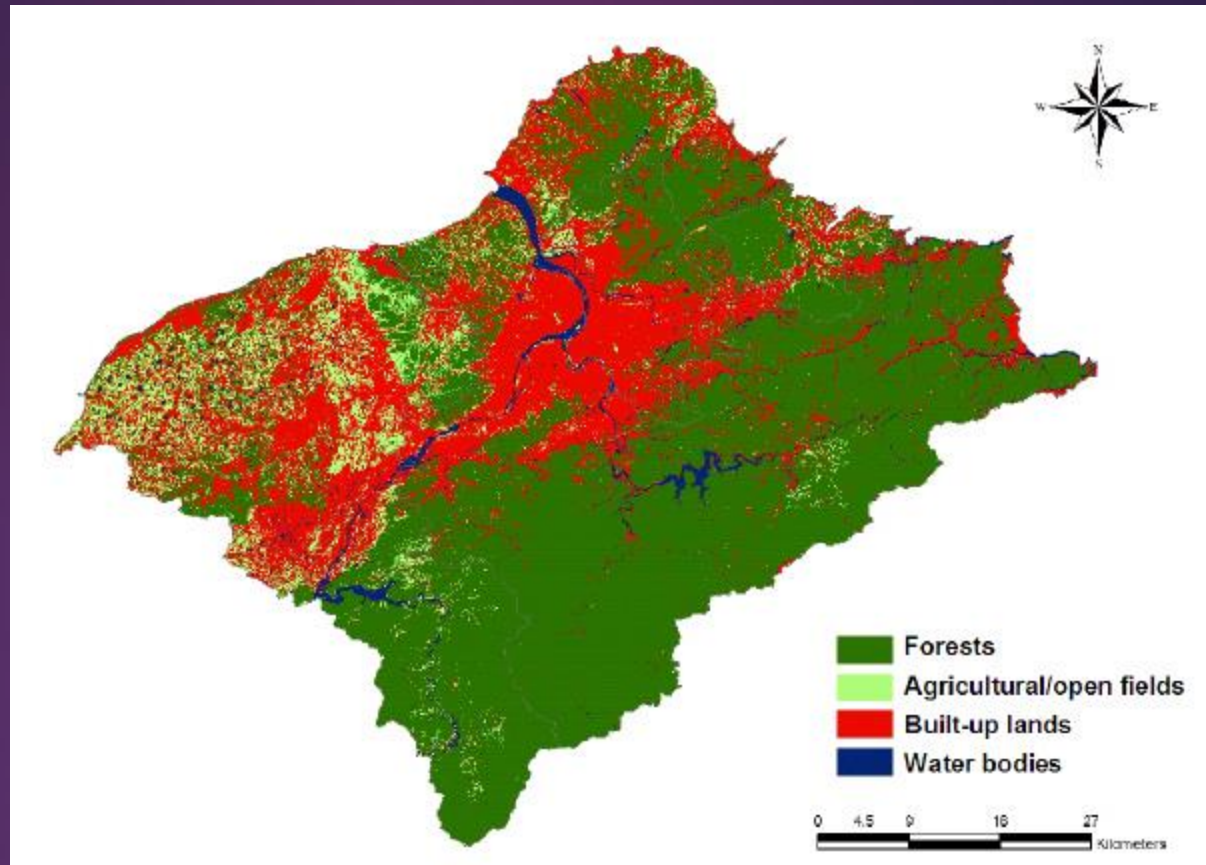


1971



1990



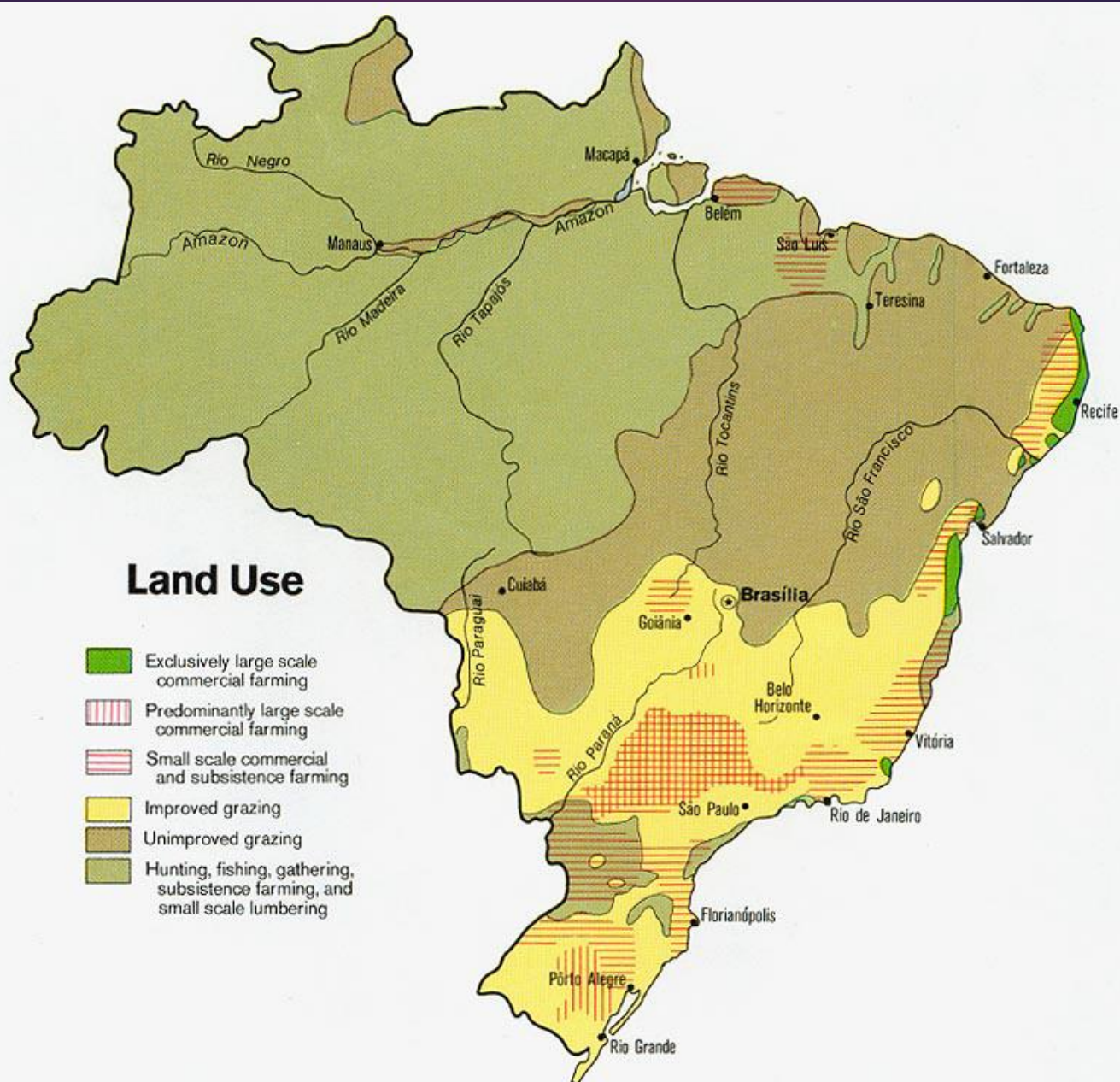


2006

# Land use

- ▶ Penggunaan lahan
- ▶ Lahan digunakan untuk dimanfaatkan

# Land use = guna lahan







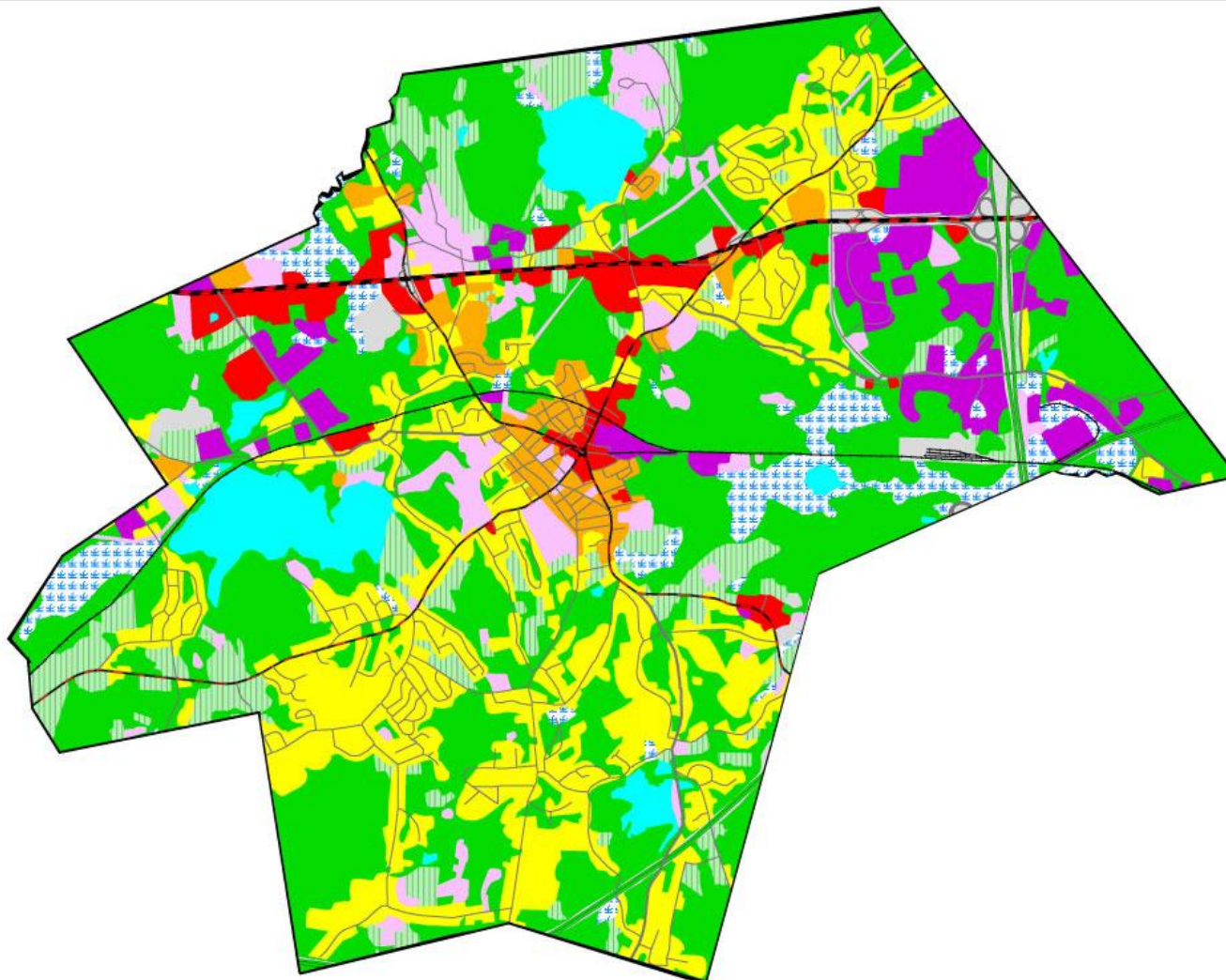
## Town of Westborough Land Use 1999

- Agriculture
- Forest
- Unforested Wetland
- Recreation and Open Land
- High Density Residential
- Low Density Residential
- Commercial
- Industrial
- Other

This map is a modified version of the land use map from the Town of Westborough Master Plan developed by Daylor Consulting.



1 mile



# Rencana guna lahan

